

Product Name : KRAS inhibitor Cmpd2

Synonyms : —

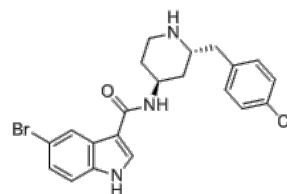
Cat No. : M16986

CAS Number :

Molecular Formula : C₂₁H₂₁BrClN₃O

Formula Weight : 446.77

Chemical Name : 5-bromo-N-((2R,4S)-2-(4-chlorobenzyl)piperidin-4-yl)-1H-indole-3-carboxamide



Description : KRAS inhibitor Cmpd2 is a small-molecule compound that blocks biochemical and cellular functions of KRASG12V with IC₅₀ of 0.8 μM in vitro; inhibits cell proliferation in SW1990 cells with EC₅₀ of 2.7 μM; the potency of Cmpd2 was strongly enhanced when prenylated K-RAS4B is associated with a lipid bilayer.

Pathway : MAPK/ERK Signaling

Target : Ras

Receptor : Ras

Solubility : —

SMILES : —

Storage : (-20°C)

Stability : ≥ 2 years

Reference :

1. Fang Z, et al. Cell Chem Biol. 2018 Aug 14. pii: S2451-9456(18)30261-7. 2. Jansen JM, et al. PLoS One. 2017 Apr 6;12(4):e0174706.