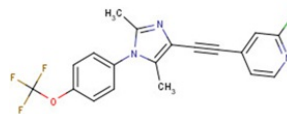


Product Name	: CTEP
Synonyms	: RO4956371; RO-4956371; RO 4956371; CTEP
Cat No.	: M17635
CAS Number	: 871362-31-1
Molecular Formula	: C ₁₉ H ₁₃ ClF ₃ N ₃ O
Formula Weight	: 391.77
Chemical Name	: 2-chloro-4-[2-[2,5-dimethyl-1-[4-(trifluoromethoxy)phenyl]imidazol-4-yl]ethynyl]pyridine
Description	CTEP, also known as RO4956371, is a potent, long-acting, orally bioavailable allosteric antagonist of mGlu5 receptor with IC ₅₀ of 2.2 nM. CTEP binds mGlu5 with low nanomolar affinity and shows >1000-fold selectivity when tested against 103 targets, including all known mGlu receptors. CTEP penetrates the brain with a brain/plasma ratio of 2.6 and displaces the tracer ABP688 in vivo in mice from brain regions expressing mGlu5 with an average ED(50) equivalent to a drug concentration of 77.5 ng/g in brain tissue.
Pathway	: Endocrinology/Hormones
Target	: 5-HT Receptor
Receptor	: mGluR5
Solubility	: DMSO : ≥ 100 mg/mL. 255.25 mM; H ₂ O : < 0.1 mg/mL
SMILES	: <chem>CC1=NC(C#CC2=CC=NC(Cl)=C2)=C(C)N1C1=CC=C(OC(F)(F)F)C=C1</chem>
Storage	: (-20°C)
Stability	: ≥ 2 years
Reference	:



1. Lindemann L, et al. J Pharmacol Exp Ther, 2011, 339(2), 474-486.