

Product Name : Epiberberine

Synonyms : —

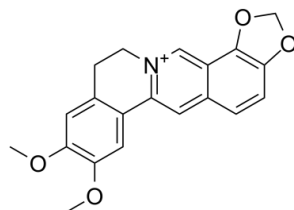
Cat No. : M17736

CAS Number : 6873-09-2

Molecular Formula : C₂₀H₁₈NO₄⁺

Formula Weight : 336.36

Chemical Name : —



Description : Epiberberine may be caused drug interactions based on CYP2D6 enzyme. Epiberberine has anti-adipogenic effect is mediated by downregulation of the Raf/MEK1/ERK1/2 and AMPKα/Akt pathways during 3T3-L1 adipocyte differentiation. 3. Epiberberine, as the brightest FSA emitter among the alkaloids, can also serve as an efficient conformation probe for HTG DNA and discriminate the DNA G-quadruplex from the RNA counterpart.

Pathway : GPCR/G Protein

Target : Hedgehog (Hh)

Receptor : ERK1/2; MEK1

Solubility : —

SMILES : COC1=C(C=C2C(=C1)CC[N+]3=C2C=C4C=CC5=C(C4=C3)OC(=O)OC5)OC

Storage : (-20°C)

Stability : ≥ 2 years

Reference :