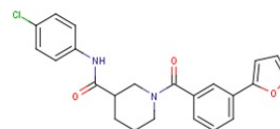


**Product Name** : CCG-203971  
**Synonyms** : CCG-203971; CCG 203971  
**Cat No.** : M18020  
**CAS Number** : 1443437-74-8  
**Molecular Formula** : C<sub>23</sub>H<sub>21</sub>ClN<sub>2</sub>O<sub>3</sub>  
**Formula Weight** : 408.88  
**Chemical Name** : N-(4-chlorophenyl)-1-[3-(furan-2-yl)benzoyl]piperidine-3-carboxamide



**Description** : CCG-203971 is an inhibitor of SRE activation in the prostate cancer cell line PC-3 (IC<sub>50</sub>: 6.4 μM), with 87% inhibition of SRE activation achieved at 100 μM. This compound also inhibits PC-3 cell migration (IC<sub>50</sub>: 4.2 μM), as determined by a scratch wound assay. CCG-203971 causes no cytotoxicity when evaluated by the WST-1 assay. It is well tolerated in normal mice up to doses of 100 mg/kg given intraperitoneally over five days.

**Pathway** : Cell Cycle/DNA Damage

**Target** : DNA/RNA Synthesis

**Receptor** : others

**Solubility** : DMSO : ≥ 155 mg/mL 379.08 mM; H<sub>2</sub>O : < 0.1 mg/mL

**SMILES** : O=C(C1CN(C(C2=CC=CC(C3=CC=CO3)=C2)=O)CCC1)NC4=CC=C(Cl)C=C4

**Storage** : (-20°C)

**Stability** : ≥ 2 years

**Reference** :