

# Human Omentin/ITLN1 antibody

Catalog Number: ATGA0282

## PRODUCT INFORMATION

---

**Catalog number**

ATGA0282

**Clone No.**

AT6C11

**Product type**

Monoclonal Antibody

**UnitProt No.**

Q8WWA0

**NCBI Accession No.**

NP\_060095

**Alternative Names**

Intelectin-1, Endothelial lectin HL-1, Galactofuranose-binding lectin, Intestinal lactoferrin receptor, Omentin, INTL, ITLN, LFR

## PRODUCT SPECIFICATION

---

**Antibody Host**

Mouse

**Reacts With**

Human

**Concentration**

1mg/ml (determined by BCA assay)

**Formulation**

Liquid in. Phosphate-Buffered Saline (pH 7.4) with 0.02% Sodium Azide, 10% glycerol

**Immunogen**

Recombinant human ITLN1 (17-313aa) purified from E. coli

**Isotype**

IgG1 kappa

**Purification Note**

By protein-A affinity chromatography

**Application**

ELISA, WB

**Usage**

The antibody has been tested by ELISA and Western blot analysis to assure specificity and reactivity. Since application varies, however, each investigation should be titrated by the reagent to obtain optimal results.

# Human Omentin/ITLN1 antibody

Catalog Number: ATGA0282

## Storage

Can be stored at +2C to +8C for 1 week. For long term storage, aliquot and store at -20C to -80C. Avoid repeated freezing and thawing cycles.

## BACKGROUND

### Description

ITLN1, also known as intelectin1 or omentin, has no effect on basal glucose uptake but enhances insulin-stimulated glucose uptake in adipocytes. ITLN1 may play a role in the defense system against microorganisms and specifically recognize carbohydrate chains of pathogens and bacterial components containing galactofuranosyl residues, in a calcium-dependent manner.

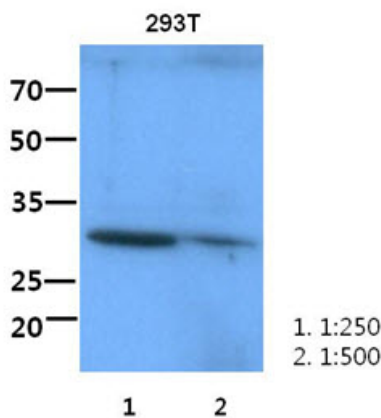
### General References

Tsuji S., et al. (2001) J. Biol. Chem. 276:23456-23463.

Tsuji S., et al. (2007) Glycobiology (10):1045-51.

## DATA

### Western blot analysis (WB)



The cell lysate of 293T (60ug) were resolved by SDS-PAGE, transferred to PVDF membrane and probed with anti-human ITLN1 antibody(1:250-1:500). Proteins were visualized using a goat anti-mouse secondary antibody conjugated to HRP and an ECL detection system.