

Human Lactate Dehydrogenase B/LDHB antibody

Catalog Number: ATGA0365

PRODUCT INFORMATION

Catalog number

ATGA0365

Clone No.

AT14D7

Product type

Monoclonal Antibody

UnitProt No.

P07195

NCBI Accession No.

NP_002291

Alternative Names

Renal carcinoma antigen NY-REN-46, Lactate dehydrogenase B, L-lactate dehydrogenase B chain, LDH-H, LDH-B, LDH heart subunit

PRODUCT SPECIFICATION

Antibody Host

Mouse

Reacts With

Human

Concentration

1mg/ml (determined by BCA assay)

Formulation

Liquid in. Phosphate-Buffered Saline (pH 7.4) with 0.02% Sodium Azide, 10% glycerol

Immunogen

Recombinant human LDHB (1-334aa) purified from E. coli

Isotype

IgG2a kappa

Purification Note

By protein-A affinity chromatography

Application

ELISA, WB, ICC/IF

Usage

The antibody has been tested by ELISA, Western blot and ICC/IF analysis to assure specificity and reactivity. Since application varies, however, each investigation should be titrated by the reagent to obtain optimal results.

Human Lactate Dehydrogenase B/LDHB antibody

Catalog Number: ATGA0365

Storage

Can be stored at +2C to +8C for 1 week. For long term storage, aliquot and store at -20C to -80C. Avoid repeated freezing and thawing cycles.

BACKGROUND

Description

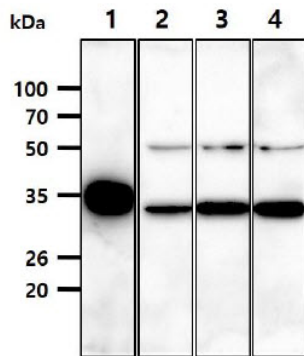
LDHB, also known as L-lactate dehydrogenase B chain, is a member of the lactate dehydrogenase family. It is an oxidoreductase which catalyses the interconversion of pyruvate and lactate with concomitant interconversion of NADH and NAD⁺. As this protein can also catalyze the oxidation of hydroxybutyrate, it is occasionally called Hydroxybutyrate Dehydrogenase (HBD). The LDH family consists of three members, LDH-A, LDH-B and LDH-C. LDHs function as powerful markers for germ cell tumors.

General References

Read JA., et al. (2001) *Proteins*. 43(2): 175-185.
Butt AA., et al. (2002) *AIDS*. 12(7): 317-321.

DATA

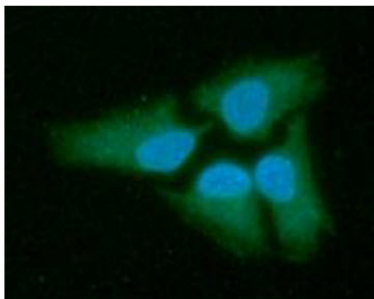
Western blot analysis (WB)



The Recombinant Human LDHB (50ng) and Cell lysates (40ug) were resolved by SDS-PAGE, transferred to PVDF membrane and probed with anti-human LDHB antibody (1:1000). Proteins were visualized using a goat anti-mouse secondary antibody conjugated to HRP and an ECL detection system.

Lane 1. : Recombinant LDHB protein
Lane 2. : A549 cell lysate
Lane 3. : 293T cell lysate
Lane 4. : Jurkat cell lysate

Immunocytochemistry/Immunofluorescence (ICC/IF)



ICC/IF analysis of LDHB in HeLa cells. The cell was stained with ATGA0365 (1:100). The secondary antibody (green) was used Alexa Fluor 488. DAPI was stained the cell nucleus (blue).