

Recombinant human CHP protein

Catalog Number: ATGP0597

PRODUCT INFORMATION

Expression system

E.coli

Domain

1-195aa

UniProt No.

Q99653

NCBI Accession No.

NP_009167

Alternative Names

Calcium-binding protein p22, SLC9A1BP, Calcineurin B homolog, Calcineurin homologous protein, Calcium-binding protein p22, Calcium binding protein CHP, Sid 470, Sid470, SLC9A1 binding protein, Wrch2

PRODUCT SPECIFICATION

Molecular Weight

24.7 kDa (216aa) confirmed by MALDI-TOF

Concentration

1mg/ml (determined by Bradford assay)

Formulation

Liquid in. 20mM Tris-HCl buffer (pH 7.5) containing 10% glycerol

Purity

> 95% by SDS-PAGE

Tag

His-Tag

Application

SDS-PAGE

Storage Condition

Can be stored at +2C to +8C for 1 week. For long term storage, aliquot and store at -20C to -80C. Avoid repeated freezing and thawing cycles.

BACKGROUND

Description

CHP (Calcium-binding protein P22) is a phosphoprotein that binds to the sodium-hydrogen exchangers (NHEs). This protein serves as an essential cofactor which supports the physiological activity of NHE family members. It has protein sequence similarity to calcineurin B and it is also known to be an endogenous inhibitor of calcineurin activity. Recombinant human CHP, fused to His-tag at N-terminus, was expressed in E. coli and purified by using conventional chromatography.

Recombinant human CHP protein

Catalog Number: ATGP0597

Amino acid Sequence

MGSSHHHHHH SSGLVPRGSH MMGSRASSTLL RDEELEEIKK ETGFSHSQIT RLYSRFTSLD KGENGTLSRE DFQRIPELAI
NPLGDRIINA FFPEGEDQVN FRGFMRTLAH FRPIEDNEKS KDVNGPEPLN SRSNKLHFAF RLYDLKDEK ISRDELLQVL
RMMVGVNISD EQLGSIADRT IQEADQDGDS AISFTEFVKV LEKVDVEQKM SIRFLH

General References

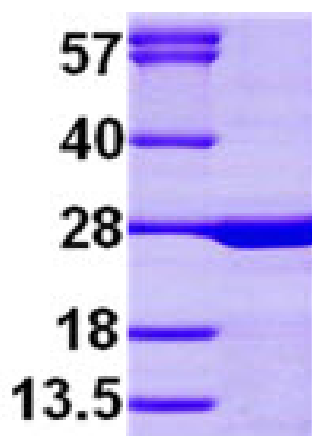
Shigekawa M., et al. (2001) J Biol Chem. 276(20):17367-72.

Kojima C., et al (2007) J Biol Chem. 282(4):2741-51.

DATA

SDS-PAGE

(kDa)



3ug by SDS-PAGE under reducing condition and visualized by coomassie blue stain.

15% SDS-PAGE (3ug)