

# Recombinant human S100B protein

Catalog Number: ATGP0628

## PRODUCT INFORMATION

---

### Expression system

E.coli

### Domain

1-92aa

### UniProt No.

P04271

### NCBI Accession No.

NP\_006263

### Alternative Names

S100 calcium binding protein B, S100 calcium binding protein beta neural, S100beta, S100 protein beta chain, S100 protein subunit beta, S100 calcium-binding protein B

## PRODUCT SPECIFICATION

---

### Molecular Weight

12.8 kDa (112aa) confirmed by MALDI-TOF

### Concentration

1mg/ml (determined by Bradford assay)

### Formulation

Liquid in. 20mM Tris-HCl buffer (pH 8.0) containing 1mM DTT, 10% glycerol

### Purity

> 90% by SDS-PAGE

### Tag

His-Tag

### Application

SDS-PAGE

### Storage Condition

Can be stored at +2C to +8C for 1 week. For long term storage, aliquot and store at -20C to -80C. Avoid repeated freezing and thawing cycles.

## BACKGROUND

---

### Description

S100B is a member of the S100 family of proteins containing 2 EF-hand calcium-binding motifs. S100 proteins are localized in the cytoplasm and/or nucleus of a wide range of cells, and involved in the regulation of a number of cellular processes such as cell cycle progression and differentiation. This protein function in Neurite extension, proliferation of melanoma cells, stimulation of Ca<sup>2+</sup> fluxes, inhibition of PKC-mediated phosphorylation, astrocytosis and axonal proliferation, and inhibition of microtubule assembly. Recombinant human S100B

# Recombinant human S100B protein

Catalog Number: ATGP0628

protein, fused to His-tag at N-terminus, was expressed in E. coli and purified by using conventional chromatography techniques.

## Amino acid Sequence

MGSSHHHHHHH SGLVPRGSH MSELEKAMVA LIDVFHQYSG REGDKHKLKK SELKELINNE LSHFLEEIKE QEVVDKVMET  
LDNDGDGECD FQEFMAFVAM VTTACHEFFE HE

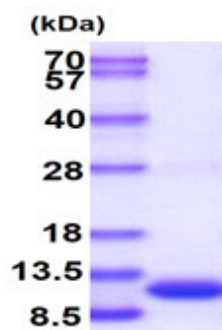
## General References

van Dieck J., et al. (2010) Oncogene. 29(14):2024-35.  
Ayilavarapu S., et al. (2010) J Immunol. 184(3):1507-15.

## DATA

---

### SDS-PAGE



15% SDS-PAGE (3ug)

3ug by SDS-PAGE under reducing condition and visualized by coomassie blue stain.