

Recombinant human RAB4A protein

Catalog Number: ATGP1104

PRODUCT INFORMATION

Expression system

E.coli

Domain

1-218aa

UniProt No.

P20338

NCBI Accession No.

NP_004569

Alternative Names

Ras-related protein Rab-4A, HRES-1/RAB4, RAB4, RAB4A member RAS oncogene family

PRODUCT SPECIFICATION

Molecular Weight

26.5 kDa (238aa) confirmed by MALDI-TOF

Concentration

1mg/ml (determined by Bradford assay)

Formulation

Liquid in. 20mM Tris-HCl buffer (pH 8.0) containing 20% glycerol 0.1M NaCl,1mM DTT

Purity

> 90% by SDS-PAGE

Tag

His-Tag

Application

SDS-PAGE

Storage Condition

Can be stored at +2C to +8C for 1 week. For long term storage, aliquot and store at -20C to -80C. Avoid repeated freezing and thawing cycles.

BACKGROUND

Description

RAB4A belongs to the small GTPase superfamily. RAB4A has been shown to interact with STX4, RAB11FIP1, RABEP1, CD2AP and KIF3B. Rab4 is also involved in the translocation of glucose transporter (Glu4) in adipocytes in response to insulin. Overexpression of Rab4 causes a redistribution of receptors on plasma membrane versus endocytic compartments. Recombinant human RAB4A protein, fused to His-tag at N-terminus, was expressed in E. coli and purified by using conventional chromatography.

Recombinant human RAB4A protein

Catalog Number: ATGP1104

Amino acid Sequence

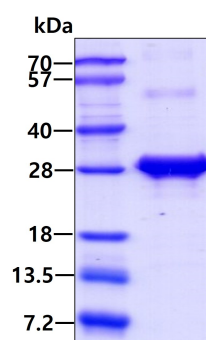
<MGSSHHHHH SSGLVPRGSH> MSQTAMSETY DFLFKFLVIG NAGTGKSCLL HQFIEKKFKD DSNHTIGVEF GSKIINVGGK
YVKLQIWDTA GQERFRSVTR SYYRGAAGAL LVDITSRET YNALTNWLT D ARMLASQNIV IILCGNKKDL DADREVTFL
ASRFAQENEL MFLETSALTG ENVEEAFVQC ARKILNKIES GELDPERMGS GIQYGDAALR QLRSPRAQA PNAQECGC

General References

Li L. et al. (2001) J Biol Chem. 276:5265-73.
Lindsay A.J. et al. (2002) J Biol Chem. 277:12190-9.

DATA

SDS-PAGE



3ug by SDS-PAGE under reducing condition and visualized by coomassie blue stain.