

# Recombinant human CEACAM7/CEA protein

Catalog Number: ATGP2125

## PRODUCT INFORMATION

---

### Expression system

E.coli

### Domain

36-242aa

### UniProt No.

Q14002

### NCBI Accession No.

AAI21133

### Alternative Names

Carcinoembryonic antigen-related cell adhesion molecule 7, CEA, Carcinoembryonic antigen related cell adhesion molecule 7, CEA cell adhesion molecule 7, CGM2

## PRODUCT SPECIFICATION

---

### Molecular Weight

25.7 kDa (230aa)

### Concentration

0.25mg/ml (determined by Bradford assay)

### Formulation

Liquid in. 20mM Tris-HCl buffer (pH 8.0) containing 0.15M NaCl, 10% glycerol

### Purity

> 90% by SDS-PAGE

### Tag

His-Tag

### Application

SDS-PAGE

### Storage Condition

Can be stored at +2C to +8C for 1 week. For long term storage, aliquot and store at -20C to -80C. Avoid repeated freezing and thawing cycles.

## BACKGROUND

---

### Description

CEACAM7 belongs to the immunoglobulin superfamily. This protein contains 1 Ig-like C2-type (immunoglobulin-like) domain and 1 Ig-like V-type (immunoglobulin-like) domain. CEACAM7 is strongly down-regulated in colonic adenocarcinomas. Recombinant human CEACAM7 fused to His-tag at N-terminus, was expressed in E. coli and purified by using conventional chromatography techniques.

## Recombinant human CEACAM7/CEA protein

Catalog Number: ATGP2125

### Amino acid Sequence

MGSSHHHHHHH SSGLVPRGSH MGSTNIDVVP FNVAEGKEVL LVVHNESQNL YGYNWKYKGER VHANYRIIGY VKNISQENAP  
GPAHNGRETI YPNGTLLIQN VTHNDAGIYT LHVIKENLVN EEVTRQFYVF SEPPKPSITS NNFNPVENKD IVVLTCCPET  
QNTTYLWWVN NQSLVSPRL LLSTDNRTL V LLSATKNDIG PYECEIQNPV GASRSDPVT L NVRYESVQAS

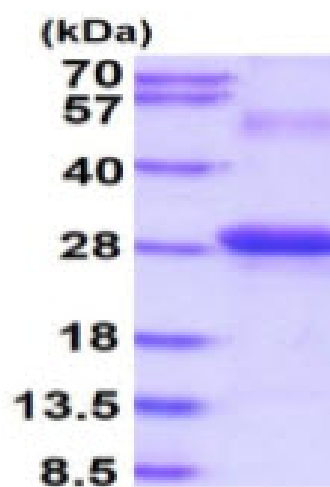
### General References

Thompson J, Seitz M, et al. (1997). *Cancer Res.* 57(9):1776-84.  
Kinugasa T, Kuroki M, et al. (1998). *Int J Cancer.* 76(1):148-53.

## DATA

---

### SDS-PAGE



3ug by SDS-PAGE under reducing condition and visualized by coomassie blue stain.

15% SDS-PAGE (3ug)