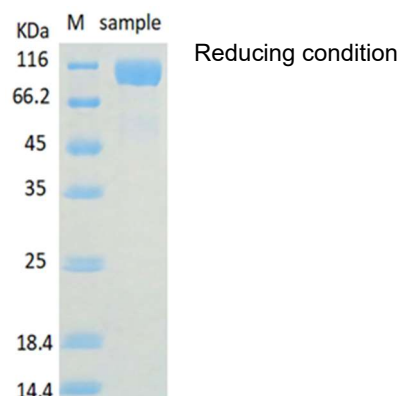


## Recombinant Human ACE-2 (C-His)

Catalog No: BP042 (C419)

<b>Description</b>	Recombinant Human Angiotensin-Converting Enzyme 2 is produced by our Mammalian expression system and the target gene encoding Gln18-Ser740 is expressed with a polyhistidine tag at the C-terminus
<b>Source</b>	HEK293
<b>Alternative name</b>	Angiotensin-Converting Enzyme 2; ACE-Related Carboxypeptidase; Angiotensin-Converting Enzyme Homolog; ACEH; Metalloprotease MPROT15; ACE2
<b>Accession No.</b>	Q9BYF1
<b>Predicted Molecular Weight</b>	85kDa
<b>Apparent Molecular Weight</b>	103kDa, reducing condition
<b>Quality Control</b>	Purity: greater than 95% as determined by reducing SDS-PAGE and SEC-HPLC Endotoxin: less than 0.1 EU/μg as determined by TAL test.
<b>Formulation</b>	Lyophilized from a sterile PBS, pH7.4 solution
<b>Reconstitution</b>	It is not recommended to reconstitute to a concentration less than 100μg/ml. Dissolve the lyophilized protein in distilled water. Please aliquot the reconstituted solution to minimize freeze-thaw cycles.
<b>Shipping</b>	The product is shipped at ambient temperature. Upon receipt, store it immediately at the temperature listed below.
<b>Storage</b>	Lyophilized protein should be stored at < -20°C, though stable at room temperature for 3 weeks. Reconstituted protein solution can be stored at 4-7°C for 2-7 days. Aliquots of reconstituted samples are stable at < -20°C for 3 months. Always centrifuge tubes before opening. Do not mix by vortex or pipetting.
<b>Background</b>	Angiotensin-Converting Enzyme 2 (ACE-2) is an integral membrane protein and a zinc metalloprotease of the ACE family, the ACE family includes somatic and germinal ACE. ACE-2 cleaves angiotensin I and II as a carboxypeptidase and converts angiotensin I to angiotensin 1-9, and angiotensin II to angiotensin 1-7. ACE-2 is also able to hydrolyze apelin-13 and dynorphin-13 with high efficiency. ACE-2 can be high expressed in testis, kidney and heart, in colon, small intestine and ovary at moderate levels. Captopril and lisinopril as the classical ACE inhibitor do not inhibit ACE-2 activity. ACE-2 may play an important role in regulating the heart function.

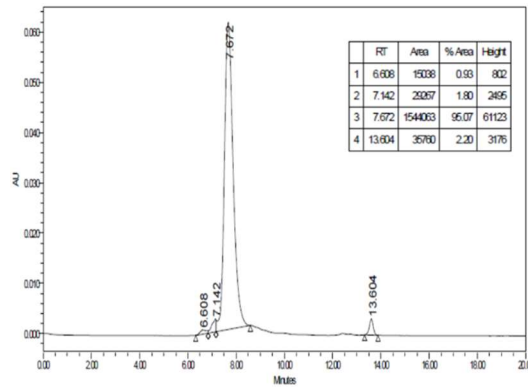
### SDS-PAGE



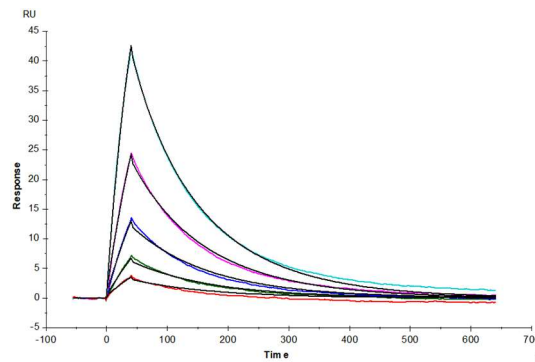
## Recombinant Human ACE-2 (C-His)

Catalog No: BP042 (C419)

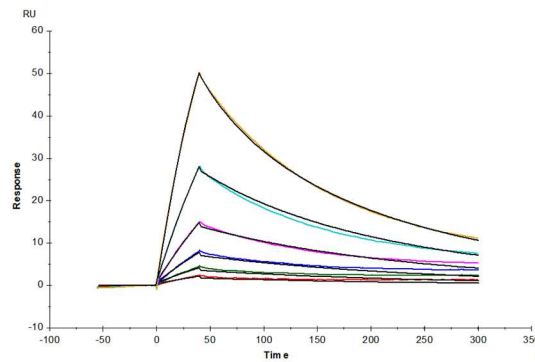
### SEC-HPLC



### Bioactivity (SPR)



Human ACE-2, His tag (Cat# BP042) captured on chip can bind to SARS-CoV-2 Spike Protein RBD-His (Cat# BP036) with an affinity constant (KD) value of 17.6nM. (Biacore T200)



Human ACE-2, His tag (Cat# BP042) captured on chip can bind to SARS-CoV-2 Spike Protein RBD, tag free (Cat# BP038) with an affinity constant (KD) value of 9.19nM. (Biacore T200)