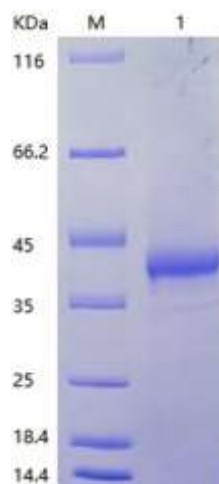


Recombinant Human Interleukin-2 Receptor Subunit Beta/IL2RB (N-Avi&His)

Catalog No: BP056

Description	Recombinant human interleukin-2 receptor subunit beta is produced by Human 293 Cells. The target gene encoding A27-T240 is expressed with a Avi&6His tag at the N terminus.
Expression System	Human
Alternative name	Interleukin-2 receptor subunit beta; IL2RB; IL-2 receptor subunit beta; IL-2R subunit beta; Highaffinity IL-2 receptor subunit beta; CD122
Accession No.	P14784
Predicted Molecular Weight	30.7kDa
Apparent Molecular Weight	IL2RB appeared as a smear between 38-44kDa in a reducing SDS-PAGE gel due to glycosylation
Quality Control	Purity: greater than 95% as determined by reducing SDS-PAGE. Endotoxin: less than 0.1 ng/μg (1 EU/μg) as determined by TAL test.
Formulation	PBS, pH 7.4
Reconstitution	It is not recommended to reconstitute to a concentration less than 100μg/ml. Dissolve the lyophilized protein in distilled water. Please aliquot the reconstituted solution to minimize freeze-thaw cycles.
Shipping	The product is shipped at ambient temperature. Upon receipt, store it immediately at the temperature listed below.
Storage	Lyophilized protein should be stored at < -20°C, though stable at room temperature for 3 weeks. Reconstituted protein solution can be stored at 4-7°C for 2-7 days. Aliquots of reconstituted samples are stable at < -20°C for 3 months. Always centrifuge tubes before opening. Do not mix by vortex or pipetting.
Background	Interleukin-2 receptor subunit beta (IL2RB) belongs to the type I cytokine receptor family and it is expressed in mononuclear cells. IL2RB contains a fibronectin type-III domain. IL2RB / CD122 is involved in T cell-mediated immune responses and is present in 3 forms with respect to ability to bind interleukin 2. The low affinity form is a monomer of the alpha subunit and is not involved in signal transduction. The intermediate affinity form consists of an alpha/beta subunit heterodimer, while the high affinity form consists of an alpha/beta/gamma subunit heterotrimer. IL2RB is the receptor for interleukin-2. This beta subunit is involved in receptor mediated endocytosis and transduces the mitogenic signals of IL2. IL2RB might also be in association with IL15RA, involved in the stimulation of neutrophil phagocytosis by IL15.

SDS-PAGE

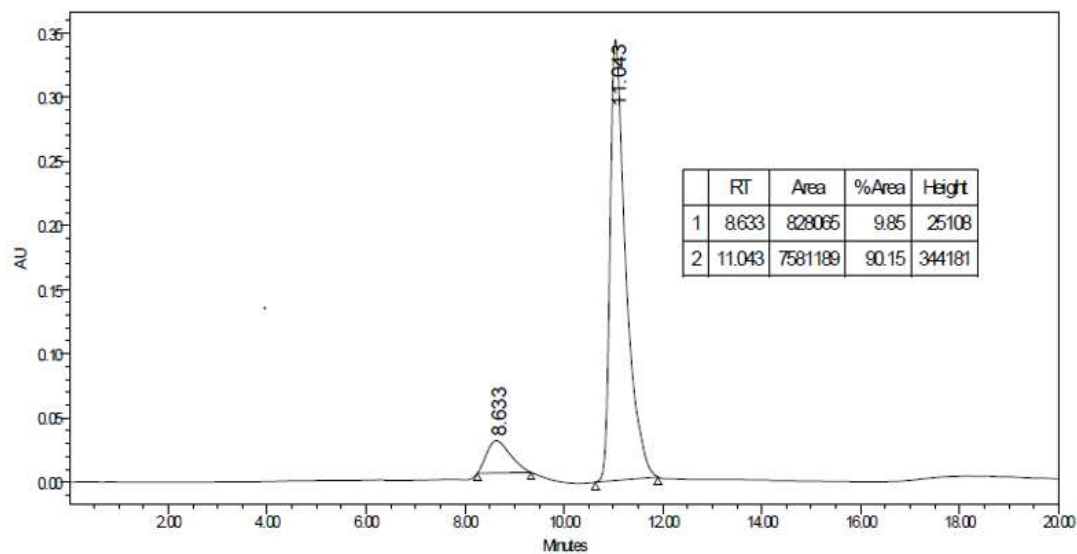


M: Marker

1: Sample in reducing conditions

HPLC

hIL2RB Test



IL2RB monomer with 90%purity