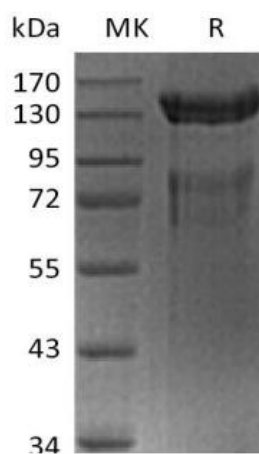


Recombinant Human BCAN

Catalog No: CA73

Description	Recombinant Human Brevican Core Protein is produced by our Mammalian expression system and the target gene encoding Asp23-Pro911 is expressed with a 6His tag at the C-terminus.
Source	Human Cells
Predicted MW	97.75kDa
Apparent MW	75-150kDa, reducing conditions.
Alternative name	Brevican Core Protein; Brain-Enriched Hyaluronan-Binding Protein; BEHAB; Chondroitin Sulfate Proteoglycan 7; BCAN; BEHAB; CSPG7
Accession No.	Q96GW7
Formulation	Lyophilized from a 0.2 µm filtered solution of 20mM PB, 150mM NaCl, pH7.4.
Reconstitution	Always centrifuge tubes before opening. Do not mix by vortex or pipetting. It is not recommended to reconstitute to a concentration less than 100µg/ml. Dissolve the lyophilized protein in distilled water. Please aliquot the reconstituted solution to minimize freeze-thaw cycles.
Quality Control	Purity: Greater than 95% as determined by reducing SDS-PAGE. Endotoxin: Less than 0.1 ng/µg (1 IEU/µg) as determined by LAL test.
Shipping	The product is shipped at ambient temperature. Upon receipt, store it immediately at the temperature listed below.
Storage	Lyophilized protein should be stored at < -20°C, though stable at room temperature for 3 weeks. Reconstituted protein solution can be stored at 4-7°C for 2-7 days. Aliquots of reconstituted samples are stable at < -20°C for 3 months.
Amino Acid Sequence	<p>DVLEGDSSSEDRAFRVRIAGDAPLQGVLGALTIPCHVHYLRPPPSRRVAVLGSPRVKWTFLSRGREAEVL VARGVRVKVNEAYRFRVALPAYPASLTDVSLALSELRPNDSGIYRCEVQHIGIDDSSDAVEVKVKGVVFLY REGSARYAFSFGAQEACARIGAHATPEQLYAAYLGGYEQCDAGWLSAQTVRYPIQTPREACYGDMD GFPGVRYNGVVDPPDLVDVYCYAEDLNGELFLGDPPEKLTLEEARAYCQERGAEIATTGQLYAAWDGGL DHCSPGWLADGSVRYPIVTPSQRCGGGLPGVKTLFLFPNQTFGPNKHSRNFVYCFRDSAQPSAIPASN PASNPASDGLEAIVTVTETLEELQLPQEATESESARGAIYSIPIMEDGGGGSSTPEDPAEAPRTLLEFETQS MVPPTGFSEEEGKALEEEEEKYEDEEEKEEEEEEEVEDEALWAWPSELSSPGPEASLPTEPAAQEKSL QAPARAVLQPGASPLPDGESEASRPPRVHGPPTETLPTPRERNLASPSTLVEAREVGEATGGPELSG VPRGESEETGSSEGAPSLPATRAPEGTRELEAPSEDNSGRTAPAGTSVQAQPVLPDTSASRGGVAVVP ASGDCVPSPCHNGGTCLLEEEGVRCCLCPGYGGDLCDVGLRFCNPGWDAFQGACYKHFSTRRSWEEA ETQCRMYGAHLASISTPEEQDFINNRYREYQWIGLNDRTIEGDFLWSDGVPLLYENWNPGQPD SYFLSG ENCVVMVWHDQGWSDVPCNYHLSYTKMGLVSCGPPPELPLAQVFGRPRLRYEVDTVLRYRCREGL AQRNLPLIRCQENGRWEAPQISCVPRRPARALHPEEDPEGRQGRLLGRWKALLIPPSSPMGPPIHHHH H</p>
Background	Brevican Core Protein (BCAN) is a secreted protein that belongs to the aggrecan/versican proteoglycan family. BCAN contains one C-type lectin domain, one EGF-like domain, one Ig-like V-type domain, one Sushi (CCP/SCR) domain and two Link domains. BCAN may play a role in the terminally differentiating and the adult nervous system during postnatal development. BCAN could stabilize interactions between hyaluronan (HA) and brain proteoglycans.

SDS-Page



MK: Marker

R: Sample in redicing condition