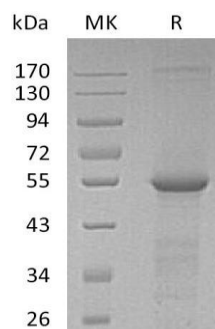


## Recombinant Human TUBB4A(N-6His)

Catalog No: CG33

<b>Description</b>	Recombinant Human Tubulin Beta-4A Chain is produced by our E.coli expression system and the target gene encoding Met1-Ala444 is expressed with a 6His tag at the N-terminus.
<b>Source</b>	E.coli
<b>Alternative name</b>	Tubulin Beta-4A Chain; Tubulin 5 Beta; Tubulin Beta-4 Chain; TUBB4A; TUBB4; TUBB5
<b>Accession No.</b>	P04350
<b>Predicted Molecular Weight</b>	51.7KDa
<b>Apparent Molecular Weight</b>	58kDa, reducing conditions.
<b>Quality Control</b>	Purity: >95% as determined by reducing SDS-PAGE. Endotoxin: Less than 0.1 ng/μg (1 EU/μg) as determined by LAL test.
<b>Formulation</b>	Lyophilized from a 0.2 μm filtered solution of 20mM PB, 150mM NaCl, pH 7.4.
<b>Reconstitution</b>	It is not recommended to reconstitute to a concentration less than 100μg/ml. Dissolve the lyophilized protein in distilled water. Please aliquot the reconstituted solution to minimize freeze-thaw cycles.
<b>Shipping</b>	The product is shipped at ambient temperature. Upon receipt, store it immediately at the temperature listed below.
<b>Storage</b>	Lyophilized protein should be stored at < -20°C, though stable at room temperature for 3 weeks. Reconstituted protein solution can be stored at 4-7°C for 2-7 days. Aliquots of reconstituted samples are stable at < -20°C for 3 months.
<b>Background</b>	Tubulin Beta-4A Chain (TUBB4A) is a cytoplasmic peptide containing 444 amino acids. TUBB4A is a member of the Tubulin family. Tubulin is the major constituent of microtubules. Tubulin is a dimer composed of one alpha and one beta tubulin molecule; there are many forms of beta tubulins, Beta II and Beta IV Tubulin are ubiquitously expressed. Beta-III Tubulin, also known as Tubulin Beta-4, is regarded as a neuron-specific marker. It binds two moles of GTP, one at an exchangeable site on the beta chain and one at a non-exchangeable site on the alpha-chain.cancer.

### SDS-PAGE



R. Reducing sample  
NR. Non-reducing sample