



Catalog Number: 10001-R021

EliteRmab® is a registered trademark of Sino Biological Inc.

GENERAL INFORMATION	
<b>Immunogen:</b>	Recombinant Human EGFR Protein (Catalog#10001-H08H)
<b>Preparation</b>	This antibody was obtained from a rabbit immunized with purified, recombinant Human EGFR (rh EGFR; Catalog#10001-H08H; Met 1-Ser 645; NP_005219)
<b>Ig Type:</b>	Rabbit IgG
<b>Clone ID:</b>	021
<b>Specificity:</b>	Human EGFR / ErbB / HER1
	No cross-reactivity in ELISA with Human ErbB2 / HER2 Human ErbB3 / HER3
<b>Formulation:</b>	0.2 µm filtered solution in PBS
<b>Storage:</b>	This antibody can be stored at 2°C-8°C for one month without detectable loss of activity. Antibody products are stable for twelve months from date of receipt when stored at -20°C to -80°C. Preservative-Free. Avoid repeated freeze-thaw cycles.
<b>Alternative Names:</b>	ERBB,ERBB1,HER1,mENA,NISBD2,PIG61
APPLICATIONS	
<b>Applications:</b>	WB,ELISA,ELISA(Det),ICC/IF
RECOMMENDED CONCENTRATION	
<b>ICC/IF</b>	ICC/IF: 1:100-1:500
<b>Western Blot</b>	WB: 1:500-1:1000
<b>ELISA</b>	ELISA: 1:25000-1:50000 This antibody can be used at 1:25000-1:50000 with the appropriate secondary reagents to detect Human EGFR.
<b>Sandwich ELISA (Detection Ab)</b>	ELISA(Det): 1:5000-1:50000 This antibody will detect Human EGFR / HER1 in ELISA pair set (Catalog: # SEK10001). In a sandwich ELISA, it can be used as detection antibody when paired with (Catalog: # 10001-RE11).

**Please Note: Optimal concentrations/dilutions should be determined by the end user.**

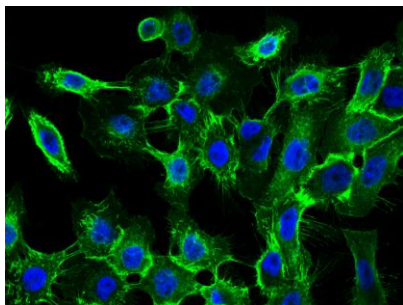
# EGFR / HER1 / ErbB1 Antibody, Rabbit MAb

Catalog Number: 10001-R021

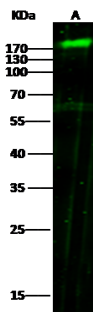


Sino Biological  
Biological Solution Specialist

EliteRmab® is a registered trademark of Sino Biological Inc.



Immunofluorescence staining of Human EGFR in A431 cells. Cells were fixed with 4% PFA, permeabilized with 0.3% Triton X-100 in PBS, blocked with 10% serum, and incubated with rabbit anti-Human EGFR monoclonal antibody (1:300) at 4°C overnight. Then cells were stained with the Alexa Fluor® 488-conjugated Goat Anti-rabbit IgG secondary antibody (green) and counterstained with DAPI (blue).



Anti-EGFR rabbit monoclonal antibody at 1:500 dilution

Lane A: A431 Whole Cell Lysate

Lysates/proteins at 30 µg per lane.

Secondary

Goat Anti-Rabbit IgG H&L (Dylight800) at 1/10000 dilution.

Developed using the Odyssey technique.  
Performed under reducing conditions.

Predicted band size:180 kDa

Observed band size:180 kDa