

Human HER2 / ErbB2 Protein (Fc Tag), Biotinylated

Catalog Number: 10004-H02H-B



Sino Biological
Biological Solution Specialist

General Information

Gene Name Synonym:

CD340; ENV; ENVW; ERVWE1; HER-2; HER-2/neu; HER2; HERV-7q; HERV-W-ENV; HERV7Q; HERVW; HERVWENV; MLN 19; MLN19; NEU; NGL; TKR1

Protein Construction:

A DNA sequence encoding the extracellular domain (Met1-Thr652) of human ErbB2 (NP_004439.2) was fused with the Fc region of human IgG1 at the C-terminus. The purified protein was biotinylated in vitro.

Source: Human

Expression Host: HEK293 Cells

QC Testing

Purity: > 95 % as determined by SDS-PAGE.

Endotoxin:

< 1.0 EU per µg protein as determined by the LAL method.

Stability:

Samples are stable for up to twelve months from date of receipt at -70 °C

Predicted N terminal: Thr 23

Molecular Mass:

The recombinant human ErbB2/Fc chimera is a disulfide-linked homodimeric protein generated by proteolytic removal of the signal peptide. The monomer consists of 868 amino acids and predicts a molecular mass of 96.1 kDa.

Formulation:

Lyophilized from sterile PBS, pH 7.4

Normally 5 % - 8 % trehalose, mannitol and 0.01% Tween80 are added as protectants before lyophilization. Specific concentrations are included in the hardcopy of COA. Please contact us for any concerns or special requirements.

Usage Guide

Storage:

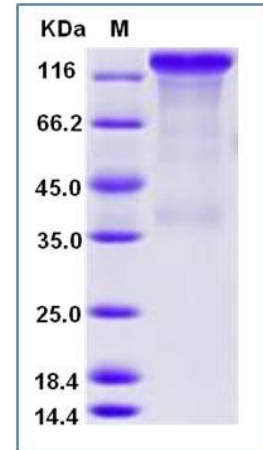
Store it under sterile conditions at -20°C to -80°C upon receiving. Recommend to aliquot the protein into smaller quantities for optimal storage.

Avoid repeated freeze-thaw cycles.

Reconstitution:

Detailed reconstitution instructions are sent along with the products.

SDS-PAGE:



Protein Description

Epidermal growth factor receptor 2 (HER2), also known as ErbB2, NEU, and CD34, is a type I membrane glycoprotein, and belongs to the epidermal growth factor (EGF) receptor family. HER2 protein cannot bind growth factors due to the lacking of ligand binding domain of its own and autoinhibited constitutively. However, HER2 forms a heterodimer with other ligand-bound EGF receptor family members, therefore stabilizes ligand binding and enhances kinase-mediated activation of downstream molecules. HER2 plays a key role in development, cell proliferation and differentiation. HER2 gene has been reported to associate with malignancy and a poor prognosis in numerous carcinomas, including breast, prostate, ovarian, lung cancers and so on.

References

3.Krawczyk N, *et al.* (2009) HER2 status on persistent disseminated tumor cells after adjuvant therapy may differ from initial HER2 status on primary tumor. *Anticancer Res.* 29(10): 4019-24.

Manufactured By Sino Biological Inc., FOR RESEARCH USE ONLY. NOT FOR USE IN HUMANS.

For US Customer: Fax: 267-657-0217 • Tel: 215-583-7898

Global Customer: Fax :+86-10-5862-8288 • Tel:+86-400-890-9989 • <http://www.sinobiological.com>