

Sox2 Antibody, Rabbit MAb



Sino Biological
Biological Solution Specialist

Catalog Number: 100106-R017

EliteRmab® is a registered trademark of Sino Biological Inc.

GENERAL INFORMATION

Immunogen:	A synthetic peptide corresponding to the N-terminus of the human Sox2.
Preparation	This antibody was obtained from a rabbit immunized with a synthetic peptide corresponding to the N-terminus of the human Sox2.
Ig Type:	Rabbit IgG
Clone ID:	017
Specificity:	Human Sox2
Formulation:	0.2 µm filtered solution in PBS
Storage:	This antibody can be stored at 2°C-8°C for one month without detectable loss of activity. Antibody products are stable for twelve months from date of receipt when stored at -20°C to -80°C. Preservative-Free. Sodium azide is recommended to avoid contamination (final concentration 0.05%-0.1%). It is toxic to cells and should be disposed of properly. Avoid repeated freeze-thaw cycles.

APPLICATIONS

Applications:	IHC-P
----------------------	-------

RECOMMENDED CONCENTRATION

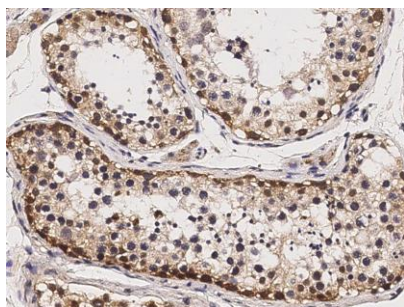
IHC-P	IHC-P: 1:100-1:500
--------------	--------------------

Please Note: Optimal concentrations/dilutions should be determined by the end user.

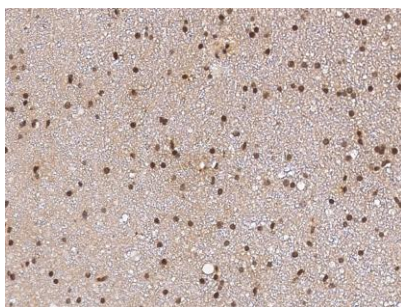


Catalog Number: 100106-R017

EliteRmab® is a registered trademark of Sino Biological Inc.



Immunohistochemical staining of human SOX2 in human testis with rabbit monoclonal antibody (1:300, formalin-fixed paraffin embedded sections).



Immunohistochemical staining of human SOX2 in human brain with rabbit monoclonal antibody (1:300, formalin-fixed paraffin embedded sections).