

Sox2 Antibody, Rabbit MAb



Sino Biological
Biological Solution Specialist

Catalog Number: 100106-R018

EliteRmab® is a registered trademark of Sino Biological Inc.

GENERAL INFORMATION

Immunogen:	A synthetic peptide corresponding to the N-terminus of the human Sox2.
Preparation	This antibody was obtained from a rabbit immunized with a synthetic peptide corresponding to the N-terminus of the human Sox2.
Ig Type:	Rabbit IgG
Clone ID:	018
Specificity:	Human Sox2
Formulation:	0.2 µm filtered solution in PBS
Storage:	This antibody can be stored at 2°C-8°C for one month without detectable loss of activity. Antibody products are stable for twelve months from date of receipt when stored at -20°C to -80°C. Preservative-Free. Sodium azide is recommended to avoid contamination (final concentration 0.05%-0.1%). It is toxic to cells and should be disposed of properly. Avoid repeated freeze-thaw cycles.

APPLICATIONS

Applications:	WB
----------------------	----

RECOMMENDED CONCENTRATION

Western Blot	WB: 1:500-1:2000
---------------------	------------------

Please Note: Optimal concentrations/dilutions should be determined by the end user.

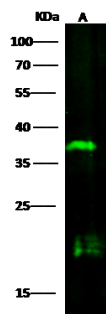
Sox2 Antibody, Rabbit MAb



Sino Biological
Biological Solution Specialist

Catalog Number: 100106-R018

EliteRmab® is a registered trademark of Sino Biological Inc.



Anti-Sox2 rabbit monoclonal antibody at 1:500 dilution

Lane A: HESS9 Whole Cell Lysate

Lysates/proteins at 30 µg per lane.

Secondary

Goat Anti-Rabbit IgG H&L (Dylight800) at 1/10000 dilution.

Developed using the Odyssey technique.

Performed under reducing conditions.

Predicted band size:34 kDa

Observed band size:37 kDa