

# Human VEGFR2 / Flk-1 / CD309 / KDR Protein (His Tag), Biotinylated

Catalog Number: 10012-H08H-B



Sino Biological  
Biological Solution Specialist

## General Information

### Gene Name Synonym:

CD309; Flk-1; FLK1; VEGFR; VEGFR2

### Protein Construction:

A DNA sequence encoding the extracellular domain of human VEGFR2 (NP\_002244.1) (Met 1-Glu 764) was fused with a polyhistidine tag at the C-terminus.

**Source:** Human

**Expression Host:** HEK293 Cells

## QC Testing

**Purity:** > 95% as determined by SDS-PAGE.

### Bio Activity:

**1. Measured by its ability to bind human VEGF165 (Cat:11066-HNAH) in functional ELISA. 2. Measured by its binding ability in a functional ELISA. 3. Immobilized human VEGF165 (Cat:11066-HNAB) at 10µg/mL (100µL/well) can bind biotinylated human KDR (Cat:10012-H08H-B), the EC<sub>50</sub> of biotinylated human KDR is 50-160ng/mL.**

### Endotoxin:

< 1.0 EU per µg protein as determined by the LAL method.

### Stability:

Samples are stable for up to twelve months from date of receipt at -70 °C

**Predicted N terminal:** Ala 20

### Molecular Mass:

The recombinant human VEGFR2 consists of 756 amino acids and predicts a molecular mass of 84.6 kDa.

### Formulation:

Lyophilized from sterile PBS

Normally 5 % - 8 % trehalose, mannitol and 0.01% Tween80 are added as protectants before lyophilization. Specific concentrations are included in the hardcopy of COA. Please contact us for any concerns or special requirements.

## Usage Guide

### Storage:

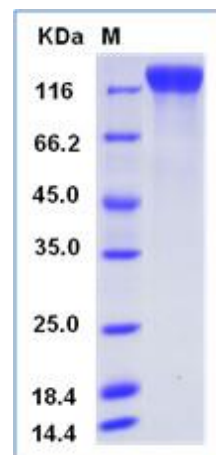
Store it under sterile conditions at -20°C to -80°C upon receiving. Recommend to aliquot the protein into smaller quantities for optimal storage.

**Avoid repeated freeze-thaw cycles.**

### Reconstitution:

Detailed reconstitution instructions are sent along with the products.

## SDS-PAGE:



## Protein Description

VEGFR2, also called as KDR or Flk-1, is identified as the receptor for VEGF and VEGFC and an early marker for endothelial cell progenitors, whose expression is restricted to endothelial cells in vivo. VEGFR2 was shown to be the primary signal transducer for angiogenesis and the development of pathological conditions such as cancer and diabetic retinopathy. It has been shown that VEGFR2 is expressed mainly in the endothelial cells, and the expression is upregulated in the tumor vasculature. Thus the inhibition of VEGFR2 activity and its downstream signaling are important targets for the treatment of diseases involving angiogenesis. VEGFR2 transduces the major signals for angiogenesis via its strong tyrosine kinase activity. However, unlike other representative tyrosine kinase receptors, VEGFR2 does not use the Ras pathway as a major downstream signaling but rather uses the phospholipase C-protein kinase C pathway to signal mitogen-activated protein (MAP)-kinase activation and DNA synthesis. VEGFR2 is a direct and major signal transducer for pathological angiogenesis, including cancer and diabetic retinopathy, in cooperation with many other signaling partners; thus, VEGFR2 and its downstream signaling appear to be critical targets for the suppression of these diseases. VEGF and VEGFR2-mediated survival signaling is critical to endothelial cell survival, maintenance of the vasculature and alveolar structure and regeneration of lung tissue. Reduced VEGF and VEGFR2 expression in emphysematous lungs has been linked to increased endothelial cell death and vascular regression.

## References

1. Shibuya M. (2006) Vascular endothelial growth factor (VEGF)-Receptor2: its biological functions, major signaling pathway, and specific ligand VEGF-E. *Endothelium*. 13(2): 63-9.
2. Marwick JA, *et al.* (2010) Cigarette smoke regulates VEGFR2-mediated survival signaling in rat lungs. *J Inflamm (Lond)*. 7(1): 11.
3. Bruns AF, *et al.* (2010) Ligand-stimulated VEGFR2 signaling is regulated by co-ordinated trafficking and proteolysis. *Traffic*. 11(1): 161-74.

Manufactured By Sino Biological Inc., FOR RESEARCH USE ONLY. NOT FOR USE IN HUMANS.

For US Customer: Fax: 267-657-0217

• Tel: 215-583-7898

Global Customer: Fax :+86-10-5862-8288

• Tel:+86-400-890-9989

• <http://www.sinobiological.com>