

BCL2/Bcl-2 Antibody (APC), Rabbit MAb



Sino Biological
Biological Solution Specialist

Catalog Number: 100126-R204-A

EliteRmab® is a registered trademark of Sino Biological Inc.

GENERAL INFORMATION

Immunogen:	A synthetic peptide corresponding to the N-terminus of the Human BCL2/Bcl-2
Reagents:	APC-conjugated Rabbit monoclonal antibody
Preparation	This antibody was obtained from a rabbit immunized with a synthetic peptide corresponding to the N-terminus of the Human BCL2/Bcl-2, and conjugated with APC under optimum conditions, the unreacted APC was removed.
Ig Type:	Rabbit IgG
Clone ID:	204
Specificity:	Human BCL2/Bcl-2
Concentration:	10 µl/Test, 0.1 mg/ml
Formulation:	Aqueous solution containing 0.5% BSA and 0.09% sodium azide
Storage:	This antibody is stable for 12 months from date of receipt when stored at 2°C-8°C. Protected from prolonged exposure to light. Do not freeze! Sodium azide is toxic to cells and should be disposed of properly. Flush with large volumes of water during disposal.

APPLICATIONS

Applications:	FCM
----------------------	-----

RECOMMENDED CONCENTRATION

Please Note: Optimal concentrations/dilutions should be determined by the end user.

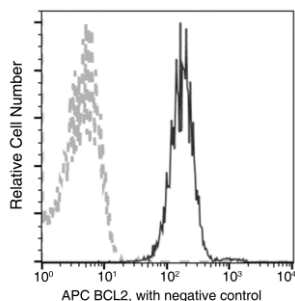
BCL2/Bcl-2 Antibody (APC), Rabbit MAb

Catalog Number: 100126-R204-A



Sino Biological
Biological Solution Specialist

EliteRmab® is a registered trademark of Sino Biological Inc.



Flow cytometric analysis of Human BCL2 expression on Jurkat cells. The cells were treated according to manufacturer's manual (BD Pharmingen™ Cat. No. 554714), stained with APC-conjugated anti-Human BCL2. The fluorescence histograms were derived from gated events with the forward and side light-scatter characteristics of intact cells.

Flow cytometry was performed on a BD FACSCalibur flow cytometry system. Please refer to www.sinobiological.com/Flow-Cytometry-FACS-Protocols-a-750.html for technical protocols.