

Ki67 / MKI67 Antibody, Mouse MAb



Sino Biological
Biological Solution Specialist

Catalog Number: 100130-MM21

GENERAL INFORMATION

Immunogen:	A synthetic peptide corresponding to the center region of the Human Ki67 / MKI67
Preparation	This antibody was produced from a hybridoma resulting from the fusion of a mouse myeloma with B cells obtained from a mouse immunized with a synthetic peptide corresponding to the center region of the Human Ki67 / MKI67. The IgG fraction of the cell culture supernatant was purified by Protein A affinity chromatography.
Ig Type:	Mouse IgG1
Clone ID:	21
Specificity:	Human Ki67 / MKI67
Formulation:	0.2 µm filtered solution in PBS
Storage:	This antibody can be stored at 2°C-8°C for one month without detectable loss of activity. Antibody products are stable for twelve months from date of receipt when stored at -20°C to -80°C. Preservative-Free. Sodium azide is recommended to avoid contamination (final concentration 0.05%-0.1%). It is toxic to cells and should be disposed of properly. Avoid repeated freeze-thaw cycles.

APPLICATIONS

Applications:	IHC-P
----------------------	-------

RECOMMENDED CONCENTRATION

IHC-P	IHC-P: 1:500-1:2000
--------------	---------------------

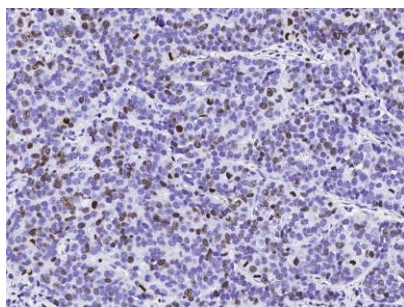
Please Note: Optimal concentrations/dilutions should be determined by the end user.

Ki67 / MKI67 Antibody, Mouse MAb

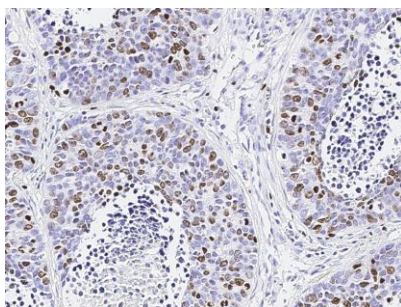


Sino Biological
Biological Solution Specialist

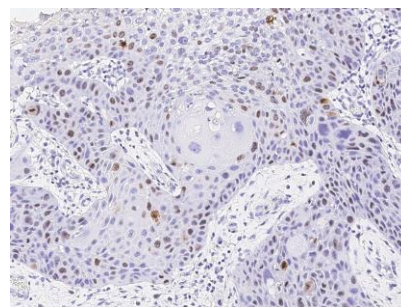
Catalog Number: 100130-MM21



Immunohistochemical staining of human Ki-67 in human breast carcinoma with mouse monoclonal antibody (1:1000, formalin-fixed paraffin embedded sections).



Immunohistochemical staining of human Ki-67 in human lung cancer with mouse monoclonal antibody (1:1000, formalin-fixed paraffin embedded sections).



Immunohistochemical staining of human Ki-67 in human esophageal carcinoma with mouse monoclonal antibody (1:1000, formalin-fixed paraffin embedded sections).