

GM-CSF / CSF2 Antibody, Rabbit PAb, Antigen Affinity Purified



Sino Biological
Biological Solution Specialist

Catalog Number: 10015-RP02

GENERAL INFORMATION	
Immunogen:	Recombinant Human GM-CSF / CSF2 protein (Catalog#10015-H07H)
Preparation	Produced in rabbits immunized with purified, recombinant Human GM-CSF / CSF2 (rh GM-CSF / CSF2; Catalog#10015-H07H; NP_000749.2; Ala18-Glu144). GM-CSF / CSF2 specific IgG was purified by Human GM-CSF / CSF2 affinity chromatography.
Ig Type:	Rabbit IgG
Specificity:	Human GM-CSF / CSF2
Formulation:	0.2 µm filtered solution in PBS
Storage:	This antibody can be stored at 2°C-8°C for one month without detectable loss of activity. Antibody products are stable for twelve months from date of receipt when stored at -20°C to -80°C. Preservative-Free. Sodium azide is recommended to avoid contamination (final concentration 0.05%-0.1%). It is toxic to cells and should be disposed of properly. Avoid repeated freeze-thaw cycles.
APPLICATIONS	
Applications:	WB,ELISA
RECOMMENDED CONCENTRATION	
Western Blot	WB: 1:500-1:2000
ELISA	ELISA: 1:5000-1:10000 This antibody can be used at 1:5000-1:10000 with the appropriate secondary reagents to detect Human GM-CSF / CSF2.

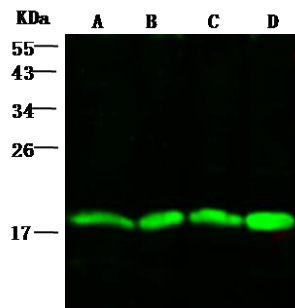
Please Note: Optimal concentrations/dilutions should be determined by the end user.

GM-CSF / CSF2 Antibody, Rabbit PAb, Antigen Affinity Purified



Sino Biological
Biological Solution Specialist

Catalog Number: 10015-RP02



Anti-GM-CSF rabbit polyclonal antibody at
1:500 dilution

Lane A: U937 Whole Cell Lysate

Lane B: 293T Whole Cell Lysate

Lane C: THP-1 Whole Cell Lysate

Lane D: Jurkat Whole Cell Lysate

Lysates/proteins at 20 µg per lane.

Secondary

Goat Anti-Rabbit IgG H&L (Dylight800) at
1/10000 dilution.

Developed using the Odyssey technique.

Performed under reducing conditions.

Predicted band size: 16 kDa

Observed band size: 18 kDa