

beta-Actin Loading Control Antibody, Mouse MAb



Sino Biological
Biological Solution Specialist

Catalog Number: 100166-MM10

GENERAL INFORMATION	
Immunogen:	A synthetic peptide corresponding to the N-terminus of the Human beta Actin / ACTB
Preparation	This antibody was produced from a hybridoma resulting from the fusion of a mouse myeloma with B cells obtained from a mouse immunized with the N-terminus of the Human beta Actin / ACTB. The IgG fraction of the cell culture supernatant was purified by Protein A affinity chromatography.
Ig Type:	Mouse IgG2a
Specificity:	Human, Mouse, Rat
Formulation:	0.2 µm filtered solution in PBS
Storage:	This antibody can be stored at 2°C-8°C for one month without detectable loss of activity. Antibody products are stable for twelve months from date of receipt when stored at -20°C to -80°C. Preservative-Free. Sodium azide is recommended to avoid contamination (final concentration 0.05%-0.1%). It is toxic to cells and should be disposed of properly. Avoid repeated freeze-thaw cycles.
APPLICATIONS	
Applications:	WB,IP
RECOMMENDED CONCENTRATION	
Western Blot	WB: 1:2500-1:200000
Immunoprecipitation	IP: 1-2 µL/mg of lysate

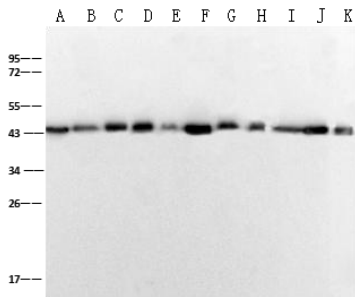
Please Note: Optimal concentrations/dilutions should be determined by the end user.

beta-Actin Loading Control Antibody, Mouse MAb



Sino Biological
Biological Solution Specialist

Catalog Number: 100166-MM10



Anti-beta-Actin mouse monoclonal antibody at 1:2500 dilution

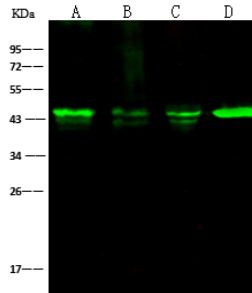
Lane A: HepG2 Whole Cell Lysate
Lane B: NIH3T3 Whole Cell Lysate
Lane C: RAW264.7 Whole Cell Lysate
Lane D: Mouse Spleen tissue lysate
Lane E: Mouse Lung tissue lysate
Lane F: Mouse Brain tissue lysate
Lane G: C6 Whole Cell Lysate
Lane H: PC-12 Whole Cell Lysate
Lane I: Rat Liver tissue lysate
Lane J: Rat Lung tissue lysate
Lane K: Rat Brain tissue lysate

Lysates/proteins at 30 µg per lane.

Secondary
HRP Conjugated Goat anti-Mouse IgG (H+L), at 1:10000 dilution.

Developed using the ECL technique.
Performed under reducing conditions.

Predicted band size: 43 kDa
Observed band size: 44 kDa



Anti-beta-Actin mouse monoclonal antibody at 1:2500 dilution

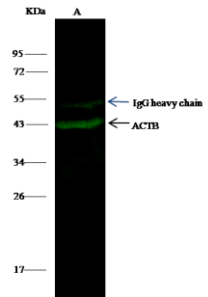
Lane A: HeLa Whole Cell Lysate
Lane B: Jurkat Whole Cell Lysate
Lane C: MCF7 Whole Cell Lysate
Lane D: A431 Whole Cell Lysate

Lysates/proteins at 30 µg per lane.

Secondary
Goat Anti-Mouse IgG H&L (Dylight800) at 1/15000 dilution.

Developed using the Odyssey technique.
Performed under reducing conditions.

Predicted band size: 43 kDa
Observed band size: 44 kDa



ACTB was immunoprecipitated using:
Lane A: 0.5 mg HeLa Whole Cell Lysate

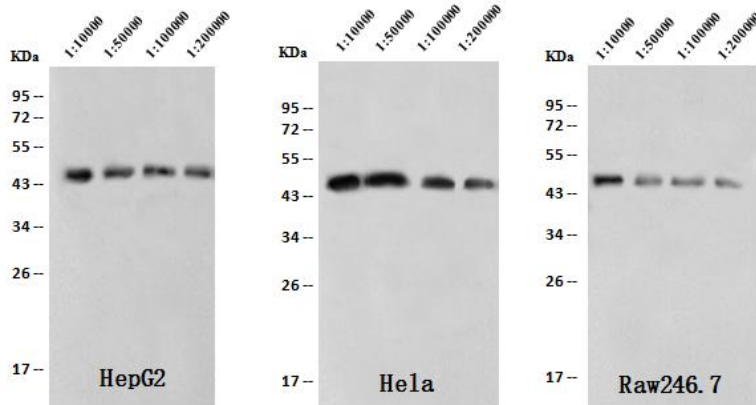
0.5 µL anti-ACTB mouse monoclonal antibody and 60 µg of Immunomagnetic beads Protein G.

Primary antibody:
Anti-ACTB mouse monoclonal antibody, at 1:100 dilution

Secondary antibody:
Dylight 800-labeled antibody to Mouse IgG (H+L), at 1:7500 dilution

Developed using the odyssey technique.
Performed under reducing conditions.

Predicted band size: 42 kDa
Observed band size: 42 kDa



Anti-beta-Actin mouse monoclonal antibody at 1:10000, 1:50000, 1:100000, 1:200000 dilution

Lysates/proteins per lane
HepG2 (30 µg), HeLa (5 µg), Raw246.7 (30 µg)

Secondary
Rabbit Anti-Mouse IgG F(ab)2/HRP at 1/10000 dilution.

Developed using the ECL technique.
Performed under reducing conditions.

Predicted band size: 43 kDa
Observed band size: 44 kDa

Manufactured By Sino Biological Inc., FOR RESEARCH USE ONLY. NOT FOR USE IN HUMANS.

Tel: 215-583-7898 (US); +86-400-890-9989(Global) • <http://www.sinobiological.com>