

4E-BP1 / EIF4EBP1 Antibody (PE), Mouse MAb



Sino Biological
Biological Solution Specialist

Catalog Number: 10022-MM04-P

GENERAL INFORMATION

Immunogen:	Recombinant Human 4E-BP1 / EIF4EBP1 protein (Catalog#10022-H07E)
Reagents:	PE-conjugated Mouse monoclonal antibody
Preparation	This antibody was produced from a hybridoma resulting from the fusion of a mouse myeloma with B cells obtained from a mouse immunized with purified, recombinant Human 4E-BP1 / EIF4EBP1 (rh 4E-BP1 / EIF4EBP1; Catalog#10022-H07E; NP_004086.1; Ser2-Ile118) and conjugated with PE under optimum conditions, the unreacted PE was removed.
Ig Type:	Mouse IgG1
Clone ID:	04
Specificity:	Human 4E-BP1 / EIF4EBP1
Concentration:	2 µl/Test, 0.1 mg/ml
Formulation:	Aqueous solution containing 0.5% BSA and 0.09% sodium azide
Storage:	This antibody is stable for 12 months from date of receipt when stored at 2°C-8°C. Protected from prolonged exposure to light. Do not freeze! Sodium azide is toxic to cells and should be disposed of properly. Flush with large volumes of water during disposal.

APPLICATIONS

Applications:	FCM
----------------------	-----

RECOMMENDED CONCENTRATION

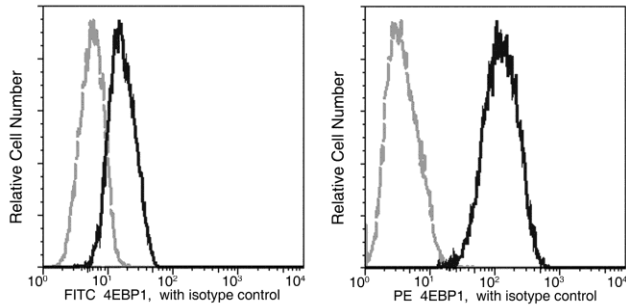
Please Note: Optimal concentrations/dilutions should be determined by the end user.

4E-BP1 / EIF4EBP1 Antibody (PE), Mouse MAb



Sino Biological
Biological Solution Specialist

Catalog Number: 10022-MM04-P



Profile of anti-4EBP1 reactivity on HepG2 cells analyzed by flow cytometry.

Flow cytometry was performed on a BD FACSCalibur flow cytometry system.

Please refer to www.sinobiological.com/Flow-Cytometry-FACS-Protocols-a-750.html for technical protocols.