

# GAPDH Loading Control Antibody, Mouse Mab



Sino Biological  
Biological Solution Specialist

Catalog Number: 100242-MM05

## GENERAL INFORMATION

|                     |   |
|---------------------|---|
| <b>Immunogen:</b>   | A synthetic peptide corresponding to the center region of the human GAPDH   |
| <b>Preparation</b>  | This antibody was produced from a hybridoma resulting from the fusion of a mouse myeloma with B cells obtained from a mouse immunized with a synthetic peptide corresponding to the center region of the human GAPDH. The IgG fraction of the cell culture supernatant was purified by Protein A affinity chromatography.   |
| <b>Ig Type:</b>     | Mouse IgG1  |
| <b>Clone ID:</b>    | 05  |
| <b>Specificity:</b> | Human GAPDH   |
| <b>Formulation:</b> | 0.2 µm filtered solution in PBS   |
| <b>Storage:</b>     | This antibody can be stored at 2°C-8°C for one month without detectable loss of activity. Antibody products are stable for twelve months from date of receipt when stored at -20°C to -80°C. Preservative-Free.<br>Sodium azide is recommended to avoid contamination (final concentration 0.05%-0.1%). It is toxic to cells and should be disposed of properly. Avoid repeated freeze-thaw cycles. |

## APPLICATIONS

|                      |         |
|----------------------|---------|
| <b>Applications:</b> | WB, IHC |
|----------------------|---------|

## RECOMMENDED CONCENTRATION

|                     |                    |
|---------------------|--------------------|
| <b>Western Blot</b> | WB: 1:500-1:2000   |
| <b>IHC-P</b>        | IHC-P: 1:100-1:500 |

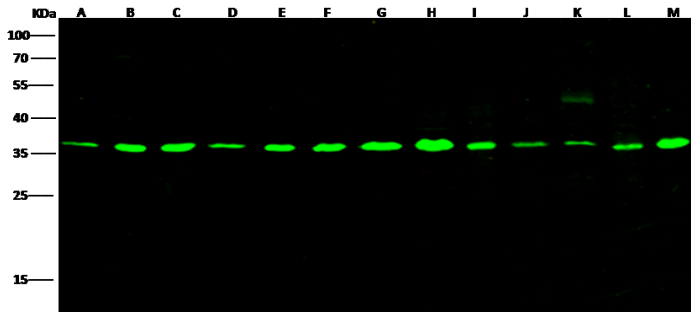
**Please Note:** Optimal concentrations/dilutions should be determined by the end user.

# GAPDH Loading Control Antibody, Mouse Mab



Sino Biological  
Biological Solution Specialist

Catalog Number: 100242-MM05



Anti-GAPDH mouse monoclonal antibody at 1:500 dilution

Lane A: SH-SY5Y whole cell lysate

Lane B: Jurkat whole cell lysate

Lane C: Hela whole cell lysate

Lane D: MCF7 whole cell lysate

Lane E: PC-3 whole cell lysate

Lane F: Daudi whole cell lysate

Lane G: A549 whole cell lysate

Lane H: Rat heart tissue lysate

Lane I: Rat liver tissue lysate

Lane J: Rat spleen tissue lysate

Lane K: Rat lung tissue lysate

Lane L: Rat kidney tissue lysate

Lane M: Rat brain tissue lysate

Lysates/proteins at 30 µg per lane.

Secondary

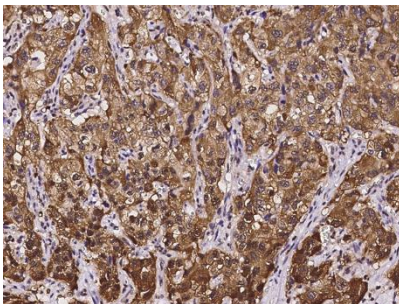
Goat Anti-Mouse IgG H&L (Dylight800) at 1/15000 dilution.

Developed using the Odyssey technique.

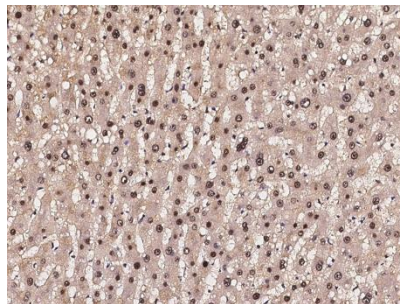
Performed under reducing conditions.

Predicted band size:36kDa

Observed band size:36kDa



Immunohistochemical staining of human GAPDH in human renal carcinoma with mouse monoclonal antibody at 1:200 dilution, formalin-fixed paraffin embedded sections.



Immunohistochemical staining of human GAPDH in human cirrhosis with mouse monoclonal antibody at 1:200 dilution, formalin-fixed paraffin embedded sections.

Manufactured By Sino Biological Inc., FOR RESEARCH USE ONLY. NOT FOR USE IN HUMANS.

Tel: 215-583-7898 (US); +86-400-890-9989(Global) • <http://www.sinobiological.com>