

GAPDH Loading Control Antibody, Rabbit Mab



Sino Biological
Biological Solution Specialist

Catalog Number: 100242-R005

EliteRmab® is a registered trademark of Sino Biological Inc.

GENERAL INFORMATION

| | |
|---------------------|---|
| Immunogen: | A synthetic peptide corresponding to the center region of the human GAPDH |
| Preparation | This antibody was obtained from a rabbit immunized with A synthetic peptide corresponding to the center region of the human GAPDH. |
| Ig Type: | Rabbit IgG |
| Clone ID: | 005 |
| Specificity: | Human GAPDH |
| Formulation: | 0.2 µm filtered solution in PBS |
| Storage: | This antibody can be stored at 2°C-8°C for one month without detectable loss of activity. Antibody products are stable for twelve months from date of receipt when stored at -20°C to -80°C. Preservative-Free. Sodium azide is recommended to avoid contamination (final concentration 0.05%-0.1%). It is toxic to cells and should be disposed of properly. Avoid repeated freeze-thaw cycles. |

APPLICATIONS

| | |
|----------------------|-------|
| Applications: | IHC-P |
|----------------------|-------|

RECOMMENDED CONCENTRATION

| | |
|--------------|--------------------|
| IHC-P | IHC-P: 1:100-1:500 |
|--------------|--------------------|

Please Note: Optimal concentrations/dilutions should be determined by the end user.

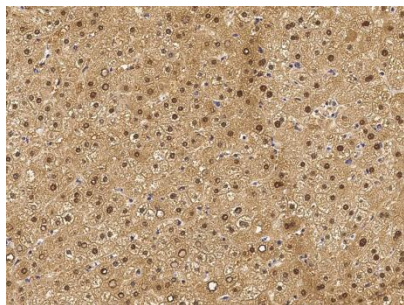
GAPDH Loading Control Antibody, Rabbit Mab

Catalog Number: 100242-R005

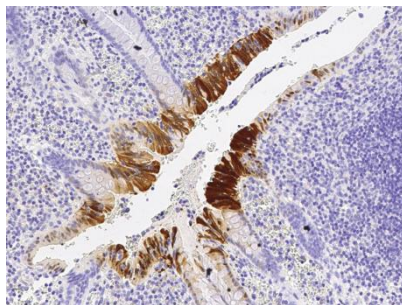


Sino Biological
Biological Solution Specialist

EliteRmab® is a registered trademark of Sino Biological Inc.



Immunochemical staining of human GAPDH in human hepatitis with rabbit monoclonal antibody (1:200, formalin-fixed paraffin embedded sections).



Immunochemical staining of human GAPDH in human appendicitis with rabbit monoclonal antibody (1:200, formalin-fixed paraffin embedded sections).