

GAPDH Antibody, Rabbit PAb, Antigen Affinity Purified



Sino Biological
Biological Solution Specialist

Catalog Number: 100242-T08

GENERAL INFORMATION

Immunogen:	A synthetic peptide corresponding to the center region of the human GAPDH
Preparation	Produced in rabbits immunized with A synthetic peptide corresponding to the center region of the human GAPDH, and purified by antigen affinity chromatography.
Ig Type:	Rabbit IgG
Specificity:	Human GAPDH
Formulation:	0.2 µm filtered solution in PBS
Storage:	This antibody can be stored at 2°C-8°C for one month without detectable loss of activity. Antibody products are stable for twelve months from date of receipt when stored at -20°C to -80°C. Preservative-Free. Sodium azide is recommended to avoid contamination (final concentration 0.05%-0.1%). It is toxic to cells and should be disposed of properly. Avoid repeated freeze-thaw cycles.

APPLICATIONS

Applications:	IHC-P
---------------	-------

RECOMMENDED CONCENTRATION

IHC-P	IHC-P: 1:1000-1:4000
-------	----------------------

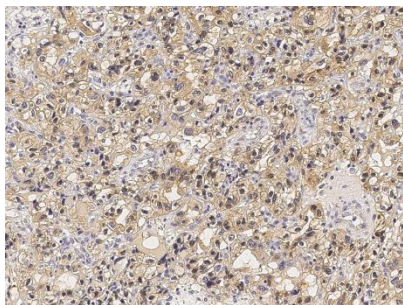
Please Note: Optimal concentrations/dilutions should be determined by the end user.

GAPDH Antibody, Rabbit PAb, Antigen Affinity Purified

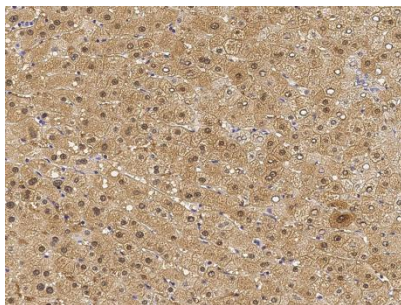
Catalog Number: 100242-T08



Sino Biological
Biological Solution Specialist



Immunohistochemical staining of human GAPDH in human renal carcinoma with rabbit polyclonal antibody (1:2000, formalin-fixed paraffin embedded sections).



Immunohistochemical staining of human GAPDH in human hepatitis with rabbit polyclonal antibody (1:2000, formalin-fixed paraffin embedded sections).