

# IL32 Antibody, Rabbit PAb, Antigen Affinity Purified



Sino Biological  
Biological Solution Specialist

Catalog Number: 100285-T32

## GENERAL INFORMATION

Immunogen:	A synthetic peptide corresponding to the N-terminus of the Human IL32
Preparation	Produced in rabbits immunized with a synthetic peptide corresponding to the N-terminus of the Human IL32, and purified by antigen affinity chromatography.
Ig Type:	Rabbit IgG
Specificity:	Human IL32
Formulation:	0.2 µm filtered solution in PBS
Storage:	This antibody can be stored at 2°C-8°C for one month without detectable loss of activity. Antibody products are stable for twelve months from date of receipt when stored at -20°C to -80°C. Preservative-Free. Sodium azide is recommended to avoid contamination (final concentration 0.05%-0.1%). It is toxic to cells and should be disposed of properly. Avoid repeated freeze-thaw cycles.

## APPLICATIONS

Applications:	WB
---------------	----

## RECOMMENDED CONCENTRATION

Western Blot	WB: 1:500-1:2000
--------------	------------------

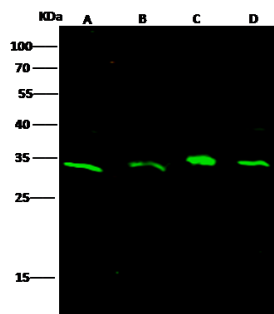
***Please Note: Optimal concentrations/dilutions should be determined by the end user.***

# IL32 Antibody, Rabbit PAb, Antigen Affinity Purified



Sino Biological  
Biological Solution Specialist

Catalog Number: 100285-T32



Anti-IL32 rabbit polyclonal antibody at 1:500 dilution

Lane A: Jurkat Whole Cell Lysate

Lane B: HT-29 Whole Cell Lysate

Lane C: SW480 Whole Cell Lysate

Lane D: HepG2 Whole Cell Lysate

Lysates/proteins at 30 µg per lane.

Secondary

Goat Anti- Rabbit IgG H&L (Dylight 800) at 1/10000 dilution.

Developed using the Odyssey technique.

Performed under reducing conditions.

Predicted band size: 28 kDa

Observed band size: 33 kDa