

NOTCH1 Antibody, Rabbit PAb, Antigen Affinity Purified



Sino Biological
Biological Solution Specialist

Catalog Number: 100296-T10

GENERAL INFORMATION

| | |
|---------------------------|--|
| Immunogen: | A synthetic peptide corresponding to the C-terminus of the Human NOTCH1 |
| Preparation | Produced in rabbits immunized with a synthetic peptide corresponding to the C-terminus of the Human NOTCH1, and purified by antigen affinity chromatography. |
| Ig Type: | Rabbit IgG |
| Specificity: | Human Mouse, Rat (Species predicted to react based on 100% sequence homology) |
| Formulation: | 0.2 µm filtered solution in PBS |
| Storage: | This antibody can be stored at 2°C-8°C for one month without detectable loss of activity. Antibody products are stable for twelve months from date of receipt when stored at -20°C to -80°C. Preservative-Free. Avoid repeated freeze-thaw cycles. |
| Alternative Names: | AOS5,AOVD1,hN1,TAN1 |

APPLICATIONS

| | |
|----------------------|--------------|
| Applications: | IHC-P,ICC/IF |
|----------------------|--------------|

RECOMMENDED CONCENTRATION

| | |
|---------------|-----------------------|
| IHC-P | IHC-P: 1:250-1:1000 |
| ICC/IF | ICC/IF: 1:300-1:10000 |

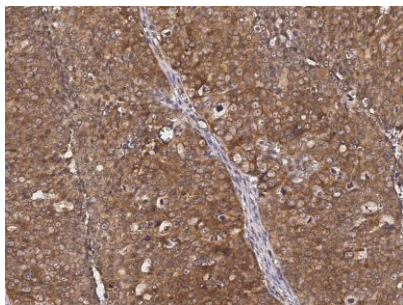
Please Note: Optimal concentrations/dilutions should be determined by the end user.

NOTCH1 Antibody, Rabbit PAb, Antigen Affinity Purified

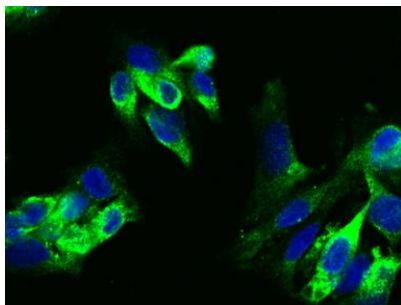
Catalog Number: 100296-T10



Sino Biological
Biological Solution Specialist



Immunohistochemical staining of human NOTCH1 in human ovarian cancer with rabbit polyclonal antibody (1:500, formalin-fixed paraffin embedded sections).



Immunofluorescence staining of NOTCH1 in HepG2 cells. Cells were fixed with 4% PFA, permeabilized with 0.3% Triton X-100 in PBS, blocked with 10% serum, and incubated with rabbit anti-human NOTCH1 polyclonal antibody (1:1000) at 4°C overnight. Then cells were stained with the Alexa Fluor®488-conjugated Goat Anti-rabbit IgG secondary antibody (green) and counterstained with DAPI (blue). Positive staining was localized to cytoplasm.