

CD27 Antibody, Rabbit MAb



Sino Biological
Biological Solution Specialist

Catalog Number: 10039-R025

EliteRmab® is a registered trademark of Sino Biological Inc.

GENERAL INFORMATION

Immunogen:	Recombinant Human CD27 Protein (Catalog#10039-H03H)
Preparation	This antibody was obtained from a rabbit immunized with purified, recombinant Human CD27 (rh CD27; Catalog#10039-H03H; NP_001233.1; Met1-Ile192).
Ig Type:	Rabbit IgG
Clone ID:	025
Specificity:	Human CD27
Formulation:	0.2 µm filtered solution in PBS
Storage:	This antibody can be stored at 2°C-8°C for one month without detectable loss of activity. Antibody products are stable for twelve months from date of receipt when stored at -20°C to -80°C. Preservative-Free. Avoid repeated freeze-thaw cycles.

APPLICATIONS

Applications:	FCM
----------------------	-----

RECOMMENDED CONCENTRATION

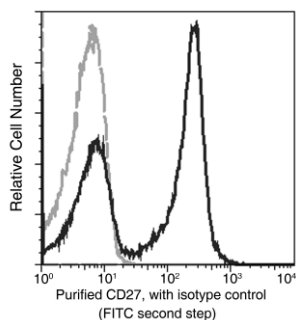
Flow Cytometry	FCM: 1:25-1:100
-----------------------	-----------------

Please Note: Optimal concentrations/dilutions should be determined by the end user.



Catalog Number: 10039-R025

EliteRmab® is a registered trademark of Sino Biological Inc.



Flow cytometric analysis of Human CD27 expression on human whole blood lymphocytes. Cells were stained with purified anti-Human CD27, then a FITC-conjugated second step antibody. The fluorescence histograms were derived from gated events with the forward and side light-scatter characteristics of viable lymphocytes.

Flow cytometry was performed on a BD FACSCalibur flow cytometry system. Please refer to www.sinobiological.com/Flow-Cytometry-FACS-Protocols-a-750.html for technical protocols.