

Glypican 3 / GPC3 / OCI-5 Antibody, Rabbit MAb



Sino Biological
Biological Solution Specialist

Catalog Number: 100392-R028

EliteRmab® is a registered trademark of Sino Biological Inc.

GENERAL INFORMATION	
Immunogen:	A synthetic peptide corresponding to the center region of the Human Glypican 3 / GPC3 / OCI-5
Preparation	This antibody was obtained from a rabbit immunized with a synthetic peptide corresponding to the center region of the Human Glypican 3 / GPC3 / OCI-5. The IgG fraction of the cell culture supernatant was purified by Protein A affinity chromatography.
Ig Type:	Rabbit IgG
Clone ID:	028
Specificity:	Human Mouse, Rat (Species predicted to react based on 100% sequence homology)
Formulation:	0.2 µm filtered solution in PBS
Storage:	This antibody can be stored at 2°C-8°C for one month without detectable loss of activity. Antibody products are stable for twelve months from date of receipt when stored at -20°C to -80°C. Preservative-Free. Sodium azide is recommended to avoid contamination (final concentration 0.05%-0.1%). It is toxic to cells and should be disposed of properly. Avoid repeated freeze-thaw cycles.
APPLICATIONS	
Applications:	IHC-P
RECOMMENDED CONCENTRATION	
IHC-P	IHC-P: 1:20-1:80

Please Note: Optimal concentrations/dilutions should be determined by the end user.

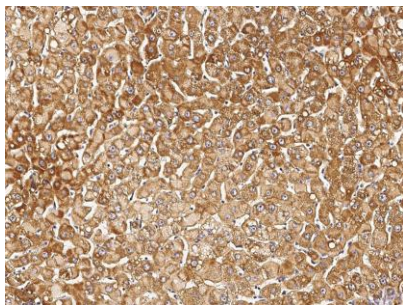
Glypican 3 / GPC3 / OCI-5 Antibody, Rabbit MAb

Catalog Number: 100392-R028

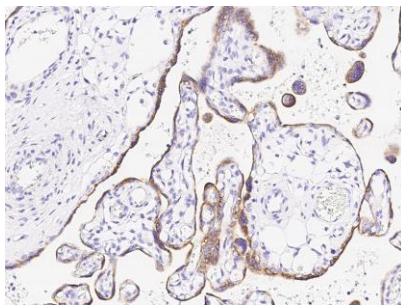


Sino Biological
Biological Solution Specialist

EliteRmab® is a registered trademark of Sino Biological Inc.



Immunohistochemical staining of human GPC3 in human hepatoma with rabbit monoclonal antibody (1:30, formalin-fixed paraffin embedded sections).



Immunohistochemical staining of human GPC3 in human placenta with rabbit monoclonal antibody (1:200, formalin-fixed paraffin embedded sections).