

# Glypican 3 / GPC3 / OCI-5 Antibody, Mouse MAb



**Sino Biological Inc.**  
Biological Solution Specialist

Catalog Number: 100393-MM08

GENERAL INFORMATION	
Immunogen:	A synthetic peptide corresponding to the center region of the Human Glypican 3 / GPC3 / OCI-5
Preparation	This antibody was produced from a hybridoma resulting from the fusion of a mouse myeloma with B cells obtained from a mouse immunized with a synthetic peptide corresponding to the center region of the Human Glypican 3 / GPC3 / OCI-5. The IgG fraction of the cell culture supernatant was purified by Protein A affinity chromatography.
Ig Type:	Mouse IgG1
Clone ID:	08
Specificity:	Human Glypican 3 / GPC3 / OCI-5
Formulation:	0.2 µm filtered solution in PBS
Storage:	This antibody can be stored at 2°C-8°C for one month without detectable loss of activity. Antibody products are stable for twelve months from date of receipt when stored at -20°C to -80°C. Preservative-Free. Sodium azide is recommended to avoid contamination (final concentration 0.05%-0.1%). It is toxic to cells and should be disposed of properly. Avoid repeated freeze-thaw cycles.
APPLICATIONS	
Applications:	ELISA,FCM
RECOMMENDED CONCENTRATION	
Flow Cytometry	FCM: 0.5-2 µg/test
ELISA	ELISA: 0.5-1 µg/ml This antibody can be used at 0.5-1 µg/ml with the appropriate secondary reagents to detect Human Glypican 3 / GPC3 / OCI-5.

**Please Note: Optimal concentrations/dilutions should be determined by the end user.**

Manufactured By Sino Biological Inc., FOR RESEARCH USE ONLY. NOT FOR USE IN HUMANS.

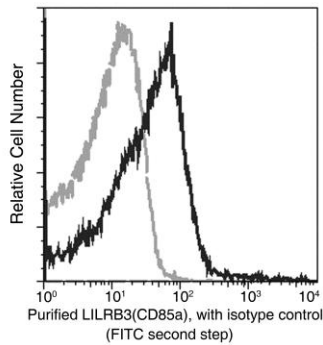
Fax :+86-10-51029969 ● Tel:+86-400-890-9989 ● <http://www.sinobiological.com>

# Glypican 3 / GPC3 / OCI-5 Antibody, Mouse MAb



**Sino Biological Inc.**  
Biological Solution Specialist

Catalog Number: 100393-MM08



Flow cytometric analysis of Mouse LILRB3(CD85a) expression on BABL/c splenocytes. Cells were stained with purified anti-Mouse LILRB3(CD85a), then a FITC-conjugated second step antibody. The fluorescence histograms were derived from gated events with the forward and side light-scatter characteristics of intact cells.

Flow cytometry was performed on a BD FACSCalibur flow cytometry system. Please refer to [www.sinobiological.com/Flow-Cytometry-FACS-Protocols-a-750.html](http://www.sinobiological.com/Flow-Cytometry-FACS-Protocols-a-750.html) for technical protocols.

Manufactured By Sino Biological Inc., FOR RESEARCH USE ONLY. NOT FOR USE IN HUMANS.

Fax :+86-10-51029969 • Tel:+86-400-890-9989 • <http://www.sinobiological.com>