

# Choline Acetyltransferase Antibody, Rabbit PAb, Antigen Affinity Purified



Sino Biological  
Biological Solution Specialist

Catalog Number: 100420-T10

## GENERAL INFORMATION

|                           |  |
|---------------------------|--|
| <b>Immunogen:</b>         | A synthetic peptide corresponding to the center region of the Human Choline Acetyltransferase  |
| <b>Preparation</b>        | Produced in rabbits immunized with a synthetic peptide corresponding to the center region of the Human Choline Acetyltransferase, and purified by antigen affinity chromatography.   |
| <b>Ig Type:</b>           | Rabbit IgG   |
| <b>Specificity:</b>       | Human Choline Acetyltransferase  |
| <b>Formulation:</b>       | 0.2 µm filtered solution in PBS  |
| <b>Storage:</b>           | This antibody can be stored at 2°C-8°C for one month without detectable loss of activity. Antibody products are stable for twelve months from date of receipt when stored at -20°C to -80°C. Preservative-Free. Avoid repeated freeze-thaw cycles. |
| <b>Alternative Names:</b> | CHOACTASE,CMS1A,CMS1A2   |

## APPLICATIONS

|                      |              |
|----------------------|--------------|
| <b>Applications:</b> | IHC-P,ICC/IF |
|----------------------|--------------|

## RECOMMENDED CONCENTRATION

|               |                       |
|---------------|-----------------------|
| <b>IHC-P</b>  | IHC-P: 1:500-1:2000   |
| <b>ICC/IF</b> | ICC/IF: 1:300-1:10000 |

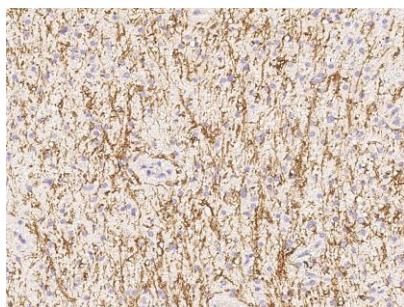
**Please Note: Optimal concentrations/dilutions should be determined by the end user.**

# Choline Acetyltransferase Antibody, Rabbit PAb, Antigen Affinity Purified

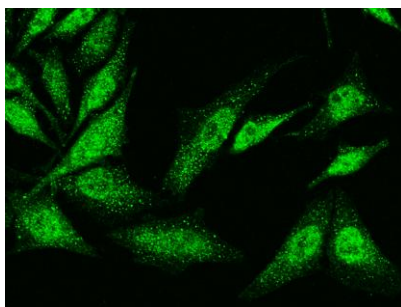


Sino Biological  
Biological Solution Specialist

Catalog Number: 100420-T10



Immunohistochemical staining of human CHAT in human brain with rabbit polyclonal antibody (1:1000, formalin-fixed paraffin embedded sections).



Immunofluorescence staining of CHAT in HeLa cells. Cells were fixed with 4% PFA, blocked with 10% serum, and incubated with rabbit anti-human CHAT polyclonal antibody (1:1000) at 4°C overnight. Then cells were stained with the Alexa Fluor®488-conjugated Goat Anti-rabbit IgG secondary antibody (green). Positive staining was localized to cytoplasm and nucleus.