

# Human IL12B / P40 Protein (His Tag)

Catalog Number: 10052-H08H



Sino Biological  
Biological Solution Specialist

## General Information

### Gene Name Synonym:

CLMF; CLMF2; IL-12B; IL12 p40; IMD28; IMD29; NKSF; NKSF2

### Protein Construction:

A DNA sequence encoding the p40 subunit of human IL12, termed as IL12B (NP\_002178.2) (Met 1-Ser 328) was fused with a polyhistidine tag at the C-terminus.

**Source:** Human

**Expression Host:** HEK293 Cells

## QC Testing

**Purity:** > 95 % as determined by SDS-PAGE

### Bio Activity:

**1. Measured by its ability to bind biotinylated recombinant human IL12RB1 in a functional ELISA. 2. Measured by its ability to bind biotinylated Human IL12A-his in functional ELISA.**

### Endotoxin:

< 1.0 EU per µg of the protein as determined by the LAL method

### Stability:

Samples are stable for up to twelve months from date of receipt at -70 °C

**Predicted N terminal:** Ile 23

### Molecular Mass:

The recombinant human IL12B consists of 317 amino acids and has a predicted molecular mass of 36.2 kDa. As a result of glycosylation, the apparent molecular mass of rhIL12B is approximately 40-50 kDa in SDS-PAGE under reducing conditions.

### Formulation:

Lyophilized from sterile PBS, pH 7.4

Normally 5 % - 8 % trehalose, mannitol and 0.01% Tween80 are added as protectants before lyophilization. Specific concentrations are included in the hardcopy of COA. Please contact us for any concerns or special requirements.

## Usage Guide

### Storage:

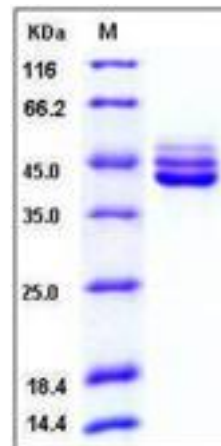
Store it under sterile conditions at -20°C to -80°C upon receiving. Recommend to aliquot the protein into smaller quantities for optimal storage.

**Avoid repeated freeze-thaw cycles.**

### Reconstitution:

Detailed reconstitution instructions are sent along with the products.

## SDS-PAGE:



## Protein Description

Subunit beta of interleukin 12 (also known as natural killer cell stimulatory factor 2, or cytotoxic lymphocyte maturation factor 2, p40) (IL12B) is a subunit of human interleukin 12. IL12B/IL-12B is a cytokine that acts on T and natural killer cells, and has a broad array of biological activities. Interleukin 12 is a disulfide-linked heterodimer composed of the 40 kD cytokine receptor like subunit encoded by this gene, and a 35 kD subunit encoded by IL12A. IL12B/IL-12B is expressed by activated macrophages that serve as an essential inducer of Th1 cells development. This cytokine has been found to be important for sustaining a sufficient number of memory/effector Th1 cells to mediate long-term protection to an intracellular pathogen. Overexpression of this gene was observed in the central nervous system of patients with multiple sclerosis (MS), suggesting a role of this cytokine in the pathogenesis of the disease. The promoter polymorphism of this gene has been reported to be associated with the severity of atopic and non-atopic asthma in children. IL12B/IL-12B associates with IL23A to form the IL-23 interleukin, an heterodimeric cytokine which functions in innate and adaptive immunity.

## References

1. Taoufik Y, *et al.* (1997) Human immunodeficiency virus gp120 inhibits interleukin-12 secretion by human monocytes: an indirect interleukin-10-mediated effect. *Blood*. 89 (8): 2842-8.
2. Fantuzzi L, *et al.* (1996) Induction of interleukin-12 (IL-12) by recombinant glycoprotein gp120 of human immunodeficiency virus type 1 in human monocytes/macrophages: requirement of gamma interferon for IL-12 secretion. *J Virol*. 70 (6): 4121-4.
3. Aragane Y, *et al.* (1995) IL-12 is expressed and released by human keratinocytes and epidermoid carcinoma cell lines. *J Immunol*. 153 (12): 5366-72.

**Manufactured By Sino Biological Inc., FOR RESEARCH USE ONLY. NOT FOR USE IN HUMANS.**

**For US Customer:** Fax: 267-657-0217 • Tel: 215-583-7898

**Global Customer:** Fax :+86-10-5862-8288 • Tel:+86-400-890-9989 • <http://www.sinobiological.com>