

FGFR3/CD333 Antibody, Mouse MAb



Sino Biological
Biological Solution Specialist

Catalog Number: 100550-MM07

GENERAL INFORMATION

Immunogen:	A synthetic peptide corresponding to the center region of the Human FGFR3/CD333
Preparation	This antibody was produced from a hybridoma resulting from the fusion of a mouse myeloma with B cells obtained from a mouse immunized with a synthetic peptide corresponding to the center region of the Human FGFR3/CD333. The IgG fraction of the cell culture supernatant was purified by Protein A affinity chromatography.
Ig Type:	Mouse IgG1
Clone ID:	07
Specificity:	Human FGFR3/CD333
Formulation:	0.2 µm filtered solution in PBS
Storage:	This antibody can be stored at 2°C-8°C for one month without detectable loss of activity. Antibody products are stable for twelve months from date of receipt when stored at -20°C to -80°C. Preservative-Free. Sodium azide is recommended to avoid contamination (final concentration 0.05%-0.1%). It is toxic to cells and should be disposed of properly. Avoid repeated freeze-thaw cycles.

APPLICATIONS

Applications:	IHC-P
---------------	-------

RECOMMENDED CONCENTRATION

IHC-P	IHC-P: 1:50-1:200
-------	-------------------

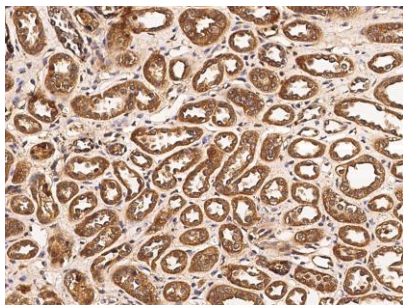
Please Note: Optimal concentrations/dilutions should be determined by the end user.

FGFR3/CD333 Antibody, Mouse MAb

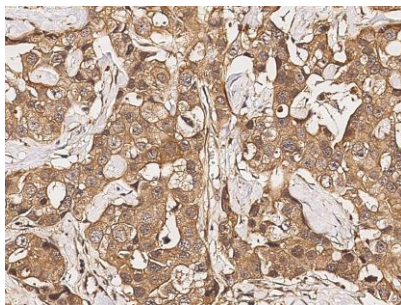


Sino Biological
Biological Solution Specialist

Catalog Number: 100550-MM07



Immunohistochemical staining of human FGFR3 in human kidney with mouse monoclonal antibody (1:100, formalin-fixed paraffin embedded sections).



Immunohistochemical staining of human FGFR3 in human breast carcinoma with mouse monoclonal antibody (1:100, formalin-fixed paraffin embedded sections).