

Endoglin / CD105 Antibody, Rabbit PAb, Antigen Affinity Purified



Sino Biological
Biological Solution Specialist

Catalog Number: 100558-T34

GENERAL INFORMATION

Immunogen:	A synthetic peptide corresponding to the C-terminus of the Human Endoglin / CD105
Preparation	Produced in rabbits immunized with a synthetic peptide corresponding to the C-terminus of the Human Endoglin / CD105 , and purified by antigen affinity chromatography.
Ig Type:	Rabbit IgG
Specificity:	Human Endoglin / CD105
Formulation:	0.2 µm filtered solution in PBS
Storage:	This antibody can be stored at 2°C-8°C for one month without detectable loss of activity. Antibody products are stable for twelve months from date of receipt when stored at -20°C to -80°C. Preservative-Free. Avoid repeated freeze-thaw cycles.
Alternative Names:	END,HHT1,ORW1

APPLICATIONS

Applications:	WB,ICC/IF
----------------------	-----------

RECOMMENDED CONCENTRATION

ICC/IF	ICC/IF: 1:1500-1:50000
Western Blot	WB: 1:500-1:1000

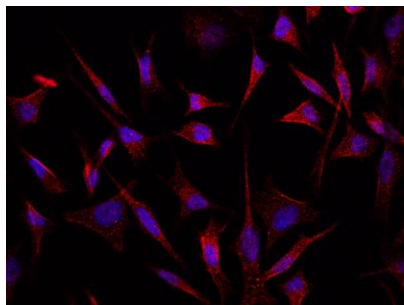
Please Note: Optimal concentrations/dilutions should be determined by the end user.

Endoglin / CD105 Antibody, Rabbit PAb, Antigen Affinity Purified

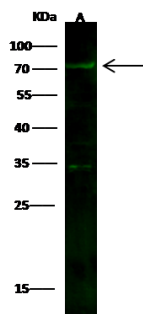


Sino Biological
Biological Solution Specialist

Catalog Number: 100558-T34



Immunofluorescence staining of ENG in HeLa cells. Cells were fixed with 4% PFA, blocked with 10% serum, and incubated with rabbit anti-human ENG polyclonal antibody (1:5000) at 4°C overnight. Then cells were stained with the Alexa Fluor®594-conjugated Goat Anti-rabbit IgG secondary antibody (red) and counterstained with DAPI (blue). Positive staining was localized to cell membrane.



Anti-ENG rabbit polyclonal antibody at 1:500 dilution

Lane A: HEK293 Whole Cell Lysate

Lysates/proteins at 30 µg per lane.

Secondary

Goat Anti- Rabbit IgG H&L (Dylight 800) at 1/10000 dilution.

Developed using the Odyssey technique.

Performed under reducing conditions.

Predicted band size:70 kDa

Observed band size:70 kDa(We are unsure as to the identity of these extra bands.)