

# PD-L1/B7-H1/CD274 Antibody (PE), Rabbit MAb



Sino Biological  
Biological Solution Specialist

Catalog Number: 10084-R611-P

EliteRmab® is a registered trademark of Sino Biological Inc.

## GENERAL INFORMATION

<b>Immunogen:</b>	Recombinant Human PD-L1/B7-H1/CD274 Protein (Catalog#10084-H08H)
<b>Reagents:</b>	PE-conjugated Rabbit monoclonal antibody
<b>Preparation</b>	This antibody was obtained from a rabbit immunized with purified, recombinant Human PD-L1/B7-H1/CD274 (rh PD-L1/B7-H1/CD274; Catalog#10084-H08H; NP_054862.1; Met1-Thr239) and conjugated with PE under optimum conditions, the unreacted PE was removed.
<b>Ig Type:</b>	Rabbit IgG
<b>Clone ID:</b>	611
<b>Specificity:</b>	Human PD-L1/B7-H1/CD274
<b>Concentration:</b>	10 µl/Test, 0.1 mg/ml
<b>Formulation:</b>	Aqueous solution containing 0.5% BSA and 0.09% sodium azide
<b>Storage:</b>	This antibody is stable for 12 months from date of receipt when stored at 2°C-8°C. Protected from prolonged exposure to light. Do not freeze! Sodium azide is toxic to cells and should be disposed of properly. Flush with large volumes of water during disposal.

## APPLICATIONS

<b>Applications:</b>	FCM
----------------------	-----

## RECOMMENDED CONCENTRATION

**Please Note:** Optimal concentrations/dilutions should be determined by the end user.

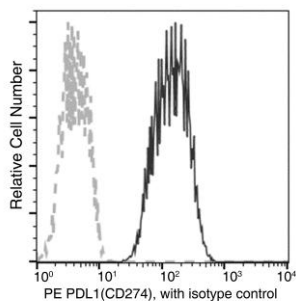
# PD-L1/B7-H1/CD274 Antibody (PE), Rabbit MAb

Catalog Number: 10084-R611-P



Sino Biological  
Biological Solution Specialist

EliteRmab® is a registered trademark of Sino Biological Inc.



Flow cytometric analysis of Human PDL1(CD274) expression on HCC827 cells. Cells were stained with PE-conjugated anti-Human-PDL1(CD274). The fluorescence histograms were derived from gated events with the forward and side light-scatter characteristics of intact cells.

Flow cytometry was performed on a BD FACSCalibur flow cytometry system. Please refer to [www.sinobiological.com/Flow-Cytometry-FACS-Protocols-a-750.html](http://www.sinobiological.com/Flow-Cytometry-FACS-Protocols-a-750.html) for technical protocols.