

EHD2 Antibody, Rabbit PAb, Antigen Affinity Purified



Sino Biological
Biological Solution Specialist

Catalog Number: 100900-T38

GENERAL INFORMATION

Immunogen:	A synthetic peptide corresponding to the C-terminus of the Human EHD2
Preparation	Produced in rabbits immunized with a synthetic peptide corresponding to the C-terminus of the Human EHD2, and purified by antigen affinity chromatography.
Ig Type:	Rabbit IgG
Specificity:	Human EHD2
Formulation:	0.2 µm filtered solution in PBS
Storage:	This antibody can be stored at 2°C-8°C for one month without detectable loss of activity. Antibody products are stable for twelve months from date of receipt when stored at -20°C to -80°C. Preservative-Free. Avoid repeated freeze-thaw cycles.
Alternative Names:	PAST2

APPLICATIONS

Applications:	WB, ICC/IF, IP
----------------------	----------------

RECOMMENDED CONCENTRATION

ICC/IF	ICC/IF: 1:300-1:10000
Western Blot	WB: 1:500-1:2000
Immunoprecipitation	IP: 1-4 µL/mg of lysate

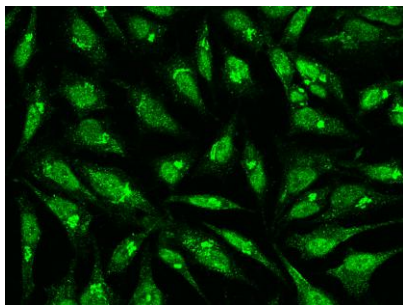
Please Note: Optimal concentrations/dilutions should be determined by the end user.

EHD2 Antibody, Rabbit PAb, Antigen Affinity Purified

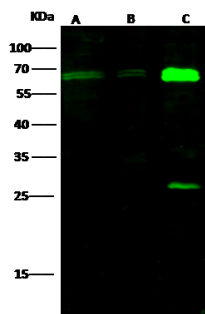
Catalog Number: 100900-T38



Sino Biological
Biological Solution Specialist



Immunofluorescence staining of EHD2 in HeLa cells. Cells were fixed with 4% PFA, blocked with 10% serum, and incubated with rabbit anti-human EHD2 polyclonal antibody (1:1000) at 4°C overnight. Then cells were stained with the Alexa Fluor®488-conjugated Goat Anti-rabbit IgG secondary antibody (green). Positive staining was localized to cytoplasm and nucleus.



Anti-EHD2 rabbit polyclonal antibody at 1:500 dilution.

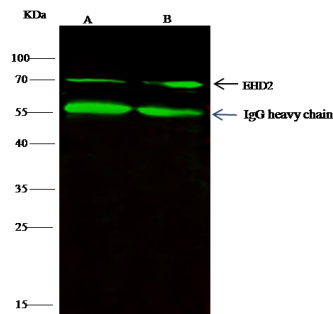
Lane A: HeLa Membrane Lysate
Lane B: A549 Membrane Lysate
Lane C: Mouse lung tissue lysate

Lysates/proteins at 30 µg per lane.

Secondary
Goat Anti- Rabbit IgG H&L (Dylight 800) at 1/10000 dilution.

Developed using the Odyssey technique.
Performed under reducing conditions.

Predicted band size: 61 kDa
Observed band size: 61 kDa



EHD2 was immunoprecipitated using:
Lane A: 0.5 mg HeLa Whole Cell Lysate
Lane B: 0.5 mg A549 Whole Cell Lysate

4 µL anti-EHD2 rabbit polyclonal antibody and 60 µg of Immunomagnetic beads Protein G.

Primary antibody:
Anti-EHD2 rabbit polyclonal antibody, at 1:100 dilution

Secondary antibody:
Dylight 800-labeled antibody to rabbit IgG (H+L), at 1:5000 dilution

Developed using the odyssey technique.
Performed under reducing conditions.

Predicted band size: 61 kDa
Observed band size: 61 kDa