

# CD55 / DAF Antibody (FITC), Rabbit MAb



Sino Biological  
Biological Solution Specialist

Catalog Number: 10101-R028-F

EliteRmab® is a registered trademark of Sino Biological Inc.

## GENERAL INFORMATION

<b>Immunogen:</b>	Recombinant Human CD55 / DAF protein (Catalog#10101-H08H)
<b>Reagents:</b>	FITC-conjugated Rabbit monoclonal antibody
<b>Preparation</b>	This antibody was obtained from a rabbit immunized with purified, recombinant Human CD55 / DAF (rh CD55 / DAF; Catalog#10101-H08H; NP_000565.1; Met 1-Ser 353) and conjugated with FITC under optimum conditions, the unreacted FITC was removed.
<b>Ig Type:</b>	Rabbit IgG
<b>Clone ID:</b>	028
<b>Specificity:</b>	Human CD55 / DAF
<b>Concentration:</b>	10 µl/Test, 0.1 mg/ml
<b>Formulation:</b>	Aqueous solution containing 0.5% BSA and 0.09% sodium azide
<b>Storage:</b>	This antibody is stable for 12 months from date of receipt when stored at 2°C-8°C. Protected from prolonged exposure to light. Do not freeze! Sodium azide is toxic to cells and should be disposed of properly. Flush with large volumes of water during disposal.

## APPLICATIONS

<b>Applications:</b>	FCM
----------------------	-----

## RECOMMENDED CONCENTRATION

*Please Note: Optimal concentrations/dilutions should be determined by the end user.*

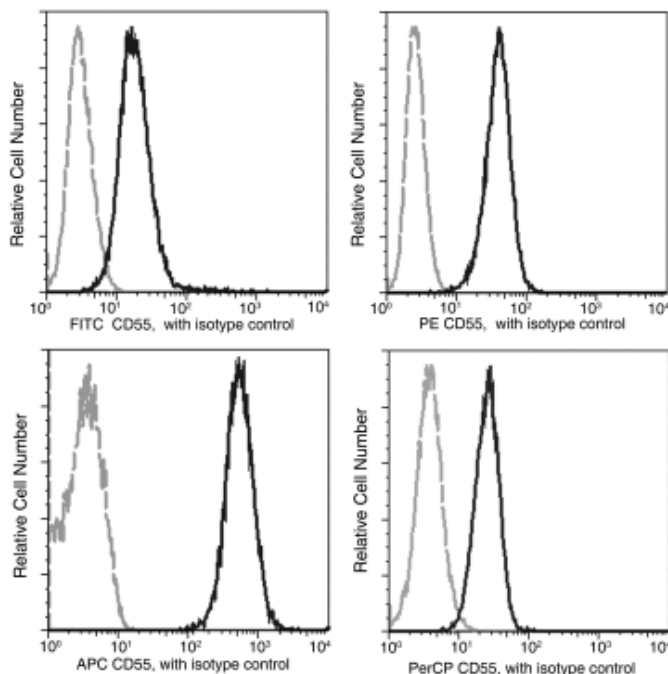
# CD55 / DAF Antibody (FITC), Rabbit MAb

Catalog Number: 10101-R028-F



Sino Biological  
Biological Solution Specialist

EliteRmab® is a registered trademark of Sino Biological Inc.



Profile of anti-CD55 reactivity on K562 cells analyzed by flow cytometry.

Flow cytometry was performed on a BD FACSCalibur flow cytometry system.

Please refer to [www.sinobiological.com/Flow-Cytometry-FACS-Protocols-a-750.html](http://www.sinobiological.com/Flow-Cytometry-FACS-Protocols-a-750.html) for technical protocols.