

TRAF6 Antibody, Rabbit PAb, Antigen Affinity Purified



Sino Biological
Biological Solution Specialist

Catalog Number: 101013-T38

GENERAL INFORMATION

Immunogen:	A synthetic peptide corresponding to the C-terminus of the Human TRAF6
Preparation	Produced in rabbits immunized with a synthetic peptide corresponding to the C-terminus of the Human TRAF6, and purified by antigen affinity chromatography.
Ig Type:	Rabbit IgG
Specificity:	Human TRAF6
Formulation:	0.2 µm filtered solution in PBS
Storage:	This antibody can be stored at 2°C-8°C for one month without detectable loss of activity. Antibody products are stable for twelve months from date of receipt when stored at -20°C to -80°C. Preservative-Free. Avoid repeated freeze-thaw cycles.
Alternative Names:	MGC:3310,RNF85

APPLICATIONS

Applications:	WB, ICC/IF, IP
----------------------	----------------

RECOMMENDED CONCENTRATION

ICC/IF	ICC/IF: 1:1500-1:50000
Western Blot	WB: 1:500-1:1000
Immunoprecipitation	IP: 0.2-1 µL/mg of lysate

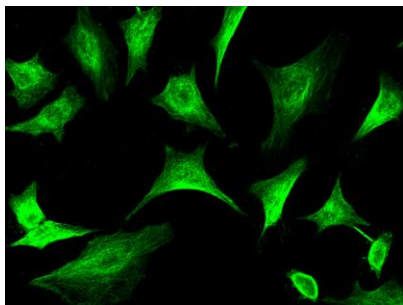
Please Note: Optimal concentrations/dilutions should be determined by the end user.

TRAF6 Antibody, Rabbit PAb, Antigen Affinity Purified

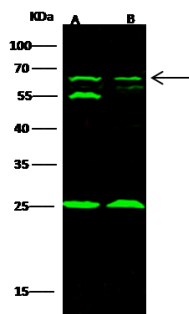
Catalog Number: 101013-T38



Sino Biological
Biological Solution Specialist



Immunofluorescence staining of TRAF6 in Hela cells. Cells were fixed with 4% PFA, permeabilized with 0.3% Triton X-100 in PBS, blocked with 10% serum, and incubated with rabbit anti-human TRAF6 polyclonal antibody (1:5000) at 4°C overnight. Then cells were stained with the Alexa Fluor®488-conjugated Goat Anti-rabbit IgG secondary antibody (green). Positive staining was localized to cytoplasm.



Anti-TRAF6 rabbit polyclonal antibody at 1:500 dilution

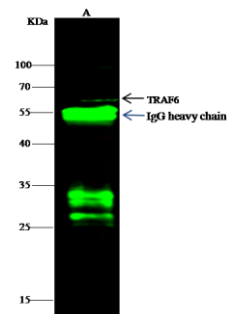
Lane A: Jurkat Whole Cell Lysate
Lane B: A549 Whole Cell Lysate

Lysates/proteins at 30 µg per lane.

Secondary
Goat Anti- Rabbit IgG H&L (Dylight 800) at 1/10000 dilution.

Developed using the Odyssey technique.
Performed under reducing conditions.

Predicted band size: 60 kDa
Observed band size: 60 kDa (We are unsure as to the identity of these extra bands.)



TRAF6 was immunoprecipitated using:
Lane A: 0.5 mg Jurkat Whole Cell Lysate

1 µL anti-TRAF6 rabbit polyclonal antibody
and 60 µg of Immunomagnetic beads Protein G.

Primary antibody:
Anti-TRAF6 rabbit polyclonal antibody, at 1:500 dilution

Secondary antibody:
Dylight 800-labeled antibody to rabbit IgG (H+L), at 1:5000 dilution

Developed using the Odyssey technique.
Performed under reducing conditions.

Predicted band size: 60 kDa
Observed band size: 60 kDa