

# UBE2M Antibody, Rabbit PAb, Antigen Affinity Purified



Sino Biological  
Biological Solution Specialist

Catalog Number: 101017-T36

## GENERAL INFORMATION

<b>Immunogen:</b>	A synthetic peptide corresponding to the C-terminus of the Human UBE2M
<b>Preparation</b>	Produced in rabbits immunized with a synthetic peptide corresponding to the C-terminus of the Human UBE2M, and purified by antigen affinity chromatography.
<b>Ig Type:</b>	Rabbit IgG
<b>Specificity:</b>	Human Mouse (Species predicted to react based on 100% sequence homology)
<b>Formulation:</b>	0.2 µm filtered solution in PBS
<b>Storage:</b>	This antibody can be stored at 2°C-8°C for one month without detectable loss of activity. Antibody products are stable for twelve months from date of receipt when stored at -20°C to -80°C. Preservative-Free. Sodium azide is recommended to avoid contamination (final concentration 0.05%-0.1%). It is toxic to cells and should be disposed of properly. Avoid repeated freeze-thaw cycles.

## APPLICATIONS

<b>Applications:</b>	WB,IP
----------------------	-------

## RECOMMENDED CONCENTRATION

<b>Western Blot</b>	WB: 1:500-1:1000
<b>Immunoprecipitation</b>	IP: 0.2-1 µL/mg of lysate

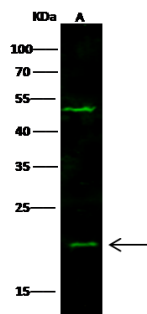
**Please Note:** Optimal concentrations/dilutions should be determined by the end user.

# UBE2M Antibody, Rabbit PAb, Antigen Affinity Purified



Sino Biological  
Biological Solution Specialist

Catalog Number: 101017-T36

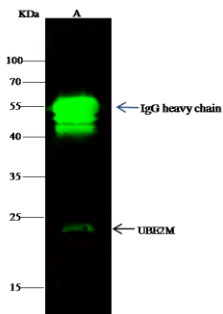


Anti-UBE2M rabbit polyclonal antibody at  
1:500 dilution  
Lane A: Jurkat Whole Cell Lysate

Lysates/proteins at 30 µg per lane.  
Secondary  
Goat Anti-Rabbit IgG H&L (Dylight800) at  
1/10000 dilution.

Developed using the Odyssey technique.  
Performed under reducing conditions.

Predicted band size: 21 kDa  
Observed band size: 21 kDa  
(We are unsure as to the identity of these  
extra bands.)



UBE2M was immunoprecipitated using:  
Lane A: 0.5 mg Jurkat Whole Cell Lysate

0.5 µL anti-UBE2M rabbit polyclonal antibody  
and 60 µg of Immunomagnetic beads Protein  
G.

Primary antibody:  
Anti-UBE2M rabbit polyclonal antibody, at  
1:500 dilution

Secondary antibody:  
Dylight 800-labeled antibody to rabbit IgG  
(H+L), at 1:5000 dilution

Developed using the odssey technique.  
Performed under reducing conditions.

Predicted band size: 21 kDa  
Observed band size: 21 kDa