

ACE2 / Angiotensin-Converting Enzyme 2 Antibody, Rabbit Pab



Sino Biological
Biological Solution Specialist

Catalog Number: 10108-RP01

GENERAL INFORMATION	
Immunogen:	Recombinant Human ACE2 / Angiotensin-Converting Enzyme 2 Protein
Preparation	Produced in rabbits immunized with purified, recombinant Human ACE2 / Angiotensin-Converting Enzyme 2 (rh ACE2 / Angiotensin-Converting Enzyme 2; NP_068576.1; 1M-740S). Total IgG was purified by Protein A affinity chromatography.
Ig Type:	Rabbit IgG
Specificity:	Human ACE2 / Angiotensin-Converting Enzyme 2
Formulation:	0.2 µm filtered solution in PBS
Storage:	This antibody can be stored at 2°C-8°C for one month without detectable loss of activity. Antibody products are stable for twelve months from date of receipt when stored at -20°C to -80°C. Preservative-Free. Sodium azide is recommended to avoid contamination (final concentration 0.05%-0.1%). It is toxic to cells and should be disposed of properly. Avoid repeated freeze-thaw cycles.
APPLICATIONS	
Applications:	ELISA
RECOMMENDED CONCENTRATION	
ELISA	ELISA: 1:1000-1:2000 This antibody can be used at 1:1000-1:2000 with the appropriate secondary reagents to detect Human ACE2 / Angiotensin-Converting Enzyme 2.

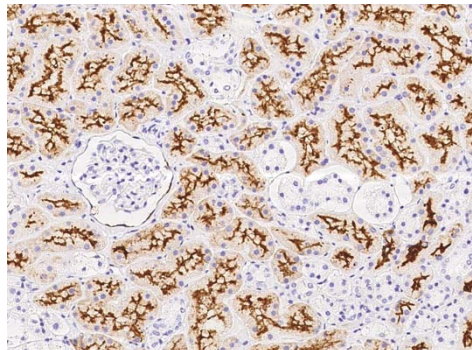
Please Note: Optimal concentrations/dilutions should be determined by the end user.

ACE2 / Angiotensin-Converting Enzyme 2 Antibody, Rabbit Pab

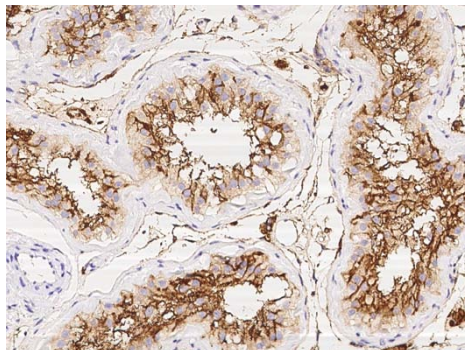


Sino Biological
Biological Solution Specialist

Catalog Number: 10108-RP01



Immunohistochemical staining of human ACE2 in human kidney with rabbit polyclonal antibody at 1:1000 dilution, formalin-fixed paraffin embedded sections.



Immunohistochemical staining of human ACE2 in human testis with rabbit polyclonal antibody at 1:1000 dilution, formalin-fixed paraffin embedded sections.