

ACE2 / Angiotensin-Converting Enzyme 2 Antibody, Rabbit PAb, Antigen Affinity Purified

Catalog Number: 10108-T56



Sino Biological
Biological Solution Specialist

GENERAL INFORMATION

| | |
|---------------------|---|
| Immunogen: | Recombinant Human ACE2 / Angiotensin-Converting Enzyme 2 Protein |
| Preparation | Produced in rabbits immunized with purified, recombinant Human ACE2 / Angiotensin-Converting Enzyme 2 (rh ACE2 / Angiotensin-Converting Enzyme 2; NP_068576.1; 1M-740S). ACE2 / Angiotensin-Converting Enzyme 2 specific IgG was purified by Human ACE2 / Angiotensin-Converting Enzyme 2 affinity chromatography. |
| Ig Type: | Rabbit IgG |
| Specificity: | Human ACE2 / Angiotensin-Converting Enzyme 2 |
| Formulation: | 0.2 µm filtered solution in PBS |
| Storage: | This antibody can be stored at 2°C-8°C for one month without detectable loss of activity. Antibody products are stable for twelve months from date of receipt when stored at -20°C to -80°C. Preservative-Free. Sodium azide is recommended to avoid contamination (final concentration 0.05%-0.1%). It is toxic to cells and should be disposed of properly. Avoid repeated freeze-thaw cycles. |

APPLICATIONS

| | |
|----------------------|----------------|
| Applications: | WB,ELISA,IHC-P |
|----------------------|----------------|

RECOMMENDED CONCENTRATION

| | |
|---------------------|--|
| IHC-P | IHC-P: 1:500-1:2000 |
| Western Blot | WB: 1:500-1:2000 |
| ELISA | ELISA: 1:5000-1:10000 This antibody can be used at 1:5000-1:10000 with the appropriate secondary reagents to detect Human ACE2 / Angiotensin-Converting Enzyme 2. |

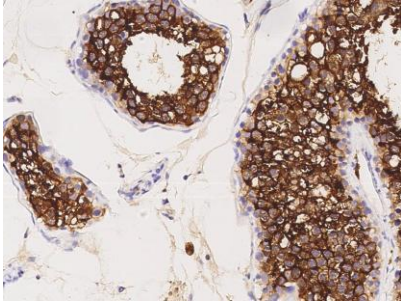
Please Note: Optimal concentrations/dilutions should be determined by the end user.

ACE2 / Angiotensin-Converting Enzyme 2 Antibody, Rabbit PAb, Antigen Affinity Purified

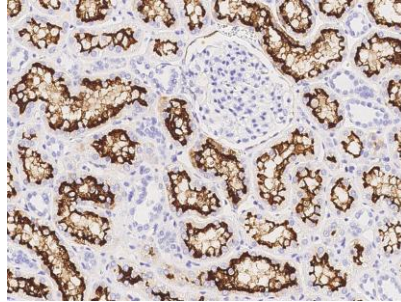
Catalog Number: 10108-T56



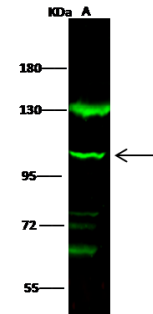
Sino Biological
Biological Solution Specialist



Immunochemical staining of human ACE2 in human testis with rabbit polyclonal antibody at 1:1000 dilution, formalin-fixed paraffin embedded sections.



Immunochemical staining of human ACE2 in human kidney with rabbit polyclonal antibody at 1:1000 dilution, formalin-fixed paraffin embedded sections.



Anti-ACE2 rabbit polyclonal antibody at 1:500 dilution

Lane A: K562 Whole Cell Lysate

Lysates/proteins at 30 µg per lane.

Secondary

Goat Anti- Rabbit IgG H&L (Dylight 800) at 1/10000 dilution.

Developed using the Odyssey technique.
Performed under reducing conditions.

Predicted band size:92 kDa

Observed band size:102 kDa

(We are unsure as to the identity of these extra bands.)