

# NR2F2/COUP-TF II Antibody, Rabbit PAb, Antigen Affinity Purified



Sino Biological  
Biological Solution Specialist

Catalog Number: 101087-T34

GENERAL INFORMATION	
Immunogen:	A synthetic peptide corresponding to the N-terminus of the Human NR2F2/COUP-TF II
Preparation	Produced in rabbits immunized with a synthetic peptide corresponding to the N-terminus of the Human NR2F2/COUP-TF II, and purified by antigen affinity chromatography.
Ig Type:	Rabbit IgG
Specificity:	Human Mouse (Species predicted to react based on 100% sequence homology)
Formulation:	0.2 µm filtered solution in PBS
Storage:	This antibody can be stored at 2°C-8°C for one month without detectable loss of activity. Antibody products are stable for twelve months from date of receipt when stored at -20°C to -80°C. Preservative-Free. Sodium azide is recommended to avoid contamination (final concentration 0.05%-0.1%). It is toxic to cells and should be disposed of properly. Avoid repeated freeze-thaw cycles.
APPLICATIONS	
Applications:	WB, ICC/IF
RECOMMENDED CONCENTRATION	
ICC/IF	ICC/IF: 1:1500-1:50000
Western Blot	WB: 1:500-1:1000

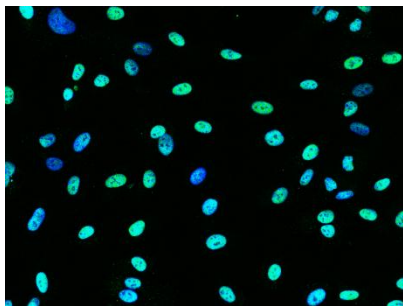
**Please Note: Optimal concentrations/dilutions should be determined by the end user.**

# NR2F2/COUP-TF II Antibody, Rabbit PAb, Antigen Affinity Purified

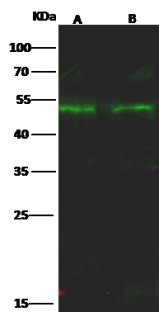


Sino Biological  
Biological Solution Specialist

Catalog Number: 101087-T34



Immunofluorescence staining of NR2F2 in HUVEC cells. Cells were fixed with 4% PFA, permeabilized with 0.3% Triton X-100 in PBS, blocked with 10% serum, and incubated with rabbit anti- NR2F2 polyclonal antibody (1:5000) at 4°C overnight. Then cells were stained with the Alexa Fluor®488-conjugated Goat Anti-rabbit IgG secondary antibody (green) and counterstained with DAPI (blue). Positive staining was localized to nucleus.



Anti-NR2F2 rabbit polyclonal antibody at 1:500 dilution

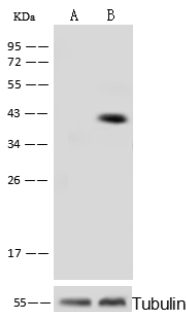
Lane A: MCF7 Whole Cell Lysate  
Lane B: HEK293 Whole Cell Lysate

Lysates/proteins at 30 µg per lane.

Secondary  
Goat Anti-Rabbit IgG H&L (Dylight800) at 1/10000 dilution.

Developed using the Odyssey technique.  
Performed under reducing conditions.

Predicted band size:46 kDa  
Observed band size:50 kDa



Anti-NR2F2 rabbit polyclonal antibody at 1:500 dilution

Lane A: NR2F2 knockout HeLa Whole Cell Lysate  
Lane B: HeLa Whole Cell Lysate

Lysates/proteins at 20 µg per lane.

Secondary  
Goat Anti-Rabbit IgG (H+L)/HRP at 1/10000 dilution.

Developed using the ECL technique.  
Performed under reducing conditions.

Predicted band size:46 kDa  
Observed band size:50 kDa