

eIF4E Antibody, Rabbit PAb, Antigen Affinity Purified



Sino Biological
Biological Solution Specialist

Catalog Number: 101113-T08

GENERAL INFORMATION

Immunogen:	A synthetic peptide corresponding to the N-terminus of the Human eIF4E
Preparation	Produced in rabbits immunized with a synthetic peptide corresponding to the N-terminus of the Human eIF4E, and purified by antigen affinity chromatography.
Ig Type:	Rabbit IgG
Specificity:	Human Mouse, Rat (Species predicted to react based on 100% sequence homology)
Formulation:	0.2 µm filtered solution in PBS
Storage:	This antibody can be stored at 2°C-8°C for one month without detectable loss of activity. Antibody products are stable for twelve months from date of receipt when stored at -20°C to -80°C. Preservative-Free. Sodium azide is recommended to avoid contamination (final concentration 0.05%-0.1%). It is toxic to cells and should be disposed of properly. Avoid repeated freeze-thaw cycles.

APPLICATIONS

Applications:	IHC-P
----------------------	-------

RECOMMENDED CONCENTRATION

IHC-P	IHC-P: 1:200-1:1000
--------------	---------------------

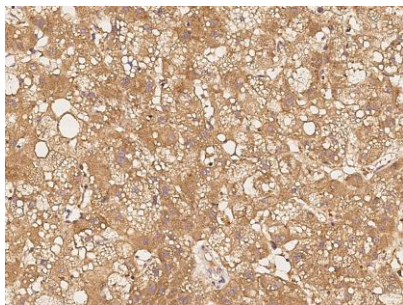
Please Note: Optimal concentrations/dilutions should be determined by the end user.

eIF4E Antibody, Rabbit PAb, Antigen Affinity Purified

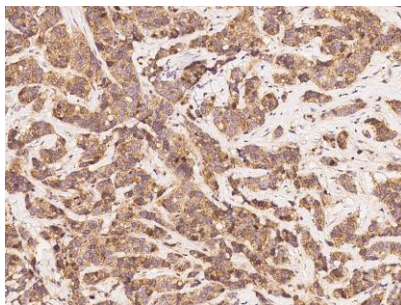
Catalog Number: 101113-T08



Sino Biological
Biological Solution Specialist



Immunohistochemical staining of human eIF4E in human hepatoma with rabbit polyclonal antibody at 1:300 dilution, formalin-fixed paraffin embedded sections.



Immunohistochemical staining of human eIF4E in human breast carcinoma with rabbit polyclonal antibody at 1:300 dilution, formalin-fixed paraffin embedded sections.