

FOXK1 Antibody, Rabbit PAb, Antigen Affinity Purified



Sino Biological
Biological Solution Specialist

Catalog Number: 101153-T10

GENERAL INFORMATION

Immunogen:	A synthetic peptide corresponding to the center region of the Human FOXK1
Preparation	Produced in rabbits immunized with a synthetic peptide corresponding to the center region of the Human FOXK1, and purified by antigen affinity chromatography.
Ig Type:	Rabbit IgG
Specificity:	Human Mouse (Species predicted to react based on 100% sequence homology)
Formulation:	0.2 µm filtered solution in PBS
Storage:	This antibody can be stored at 2°C-8°C for one month without detectable loss of activity. Antibody products are stable for twelve months from date of receipt when stored at -20°C to -80°C. Preservative-Free. Avoid repeated freeze-thaw cycles.
Alternative Names:	FOXK1L

APPLICATIONS

Applications:	IHC-P, ICC/IF
----------------------	---------------

RECOMMENDED CONCENTRATION

IHC-P	IHC-P: 1:500-1:2000
ICC/IF	ICC/IF: 1:300-1:10000

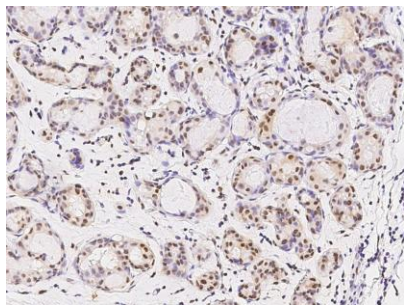
Please Note: Optimal concentrations/dilutions should be determined by the end user.

FOXK1 Antibody, Rabbit PAb, Antigen Affinity Purified

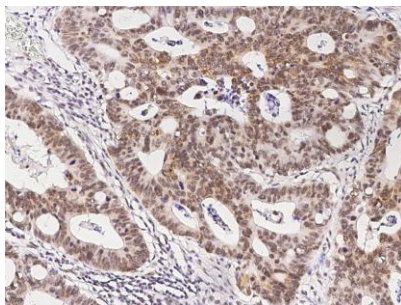
Catalog Number: 101153-T10



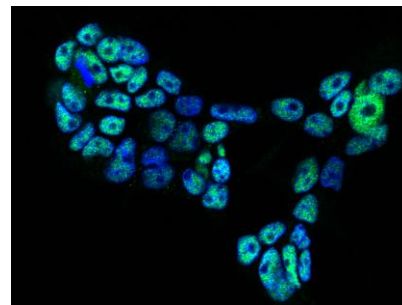
Sino Biological
Biological Solution Specialist



Immunochemical staining of human FOXK1 in human breast carcinoma with rabbit polyclonal antibody (1:1000, formalin-fixed paraffin embedded sections).



Immunochemical staining of human FOXK1 in human colon carcinoma with rabbit polyclonal antibody (1:1000, formalin-fixed paraffin embedded sections).



Immunofluorescence staining of FOXK1 in 293H cells. Cells were fixed with 4% PFA, permeabilized with 0.3% Triton X-100 in PBS, blocked with 10% serum, and incubated with rabbit anti- FOXK1 polyclonal antibody (1:1000) at 4°C overnight. Then cells were stained with the Alexa Fluor®488-conjugated Goat Anti-rabbit IgG secondary antibody (green) and counterstained with DAPI (blue). Positive staining was localized to nucleus.