

TLE1 Antibody, Rabbit PAb, Antigen Affinity Purified



Sino Biological
Biological Solution Specialist

Catalog Number: 101194-T42

GENERAL INFORMATION

Immunogen:	A synthetic peptide corresponding to the N-terminus of the Human TLE1
Preparation	Produced in rabbits immunized with a synthetic peptide corresponding to the N-terminus of the Human TLE1, and purified by antigen affinity chromatography.
Ig Type:	Rabbit IgG
Specificity:	Human TLE1
Formulation:	0.2 µm filtered solution in PBS
Storage:	This antibody can be stored at 2°C-8°C for one month without detectable loss of activity. Antibody products are stable for twelve months from date of receipt when stored at -20°C to -80°C. Preservative-Free. Avoid repeated freeze-thaw cycles.
Alternative Names:	ESG,ESG1,GRG1

APPLICATIONS

Applications:	WB,IHC-P,ICC/IF
----------------------	-----------------

RECOMMENDED CONCENTRATION

IHC-P	IHC-P: 1:2500-1:10000
ICC/IF	ICC/IF: 1:1500-1:50000
Western Blot	WB: 1:500-1:1000

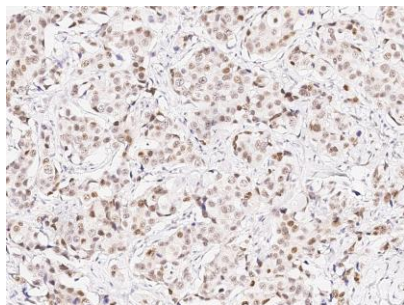
Please Note: Optimal concentrations/dilutions should be determined by the end user.

TLE1 Antibody, Rabbit PAb, Antigen Affinity Purified

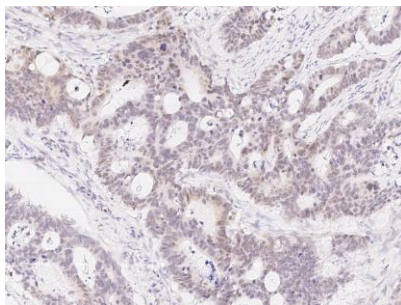


Sino Biological
Biological Solution Specialist

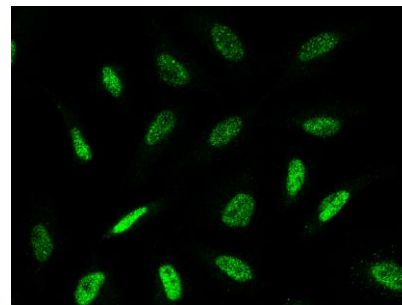
Catalog Number: 101194-T42



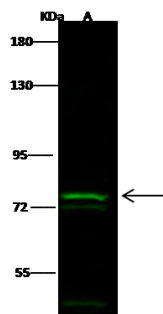
Immunohistochemical staining of human TLE1 in human breast carcinoma with rabbit polyclonal antibody (1:5000, formalin-fixed paraffin embedded sections).



Immunohistochemical staining of human TLE1 in human colon carcinoma with rabbit polyclonal antibody (1:5000, formalin-fixed paraffin embedded sections).



Immunofluorescence staining of TLE1 in HeLa cells. Cells were fixed with 4% PFA, permeabilized with 0.3% Triton X-100 in PBS, blocked with 10% serum, and incubated with rabbit anti-human TLE1 polyclonal antibody (1:5000) at 4°C overnight. Then cells were stained with the Alexa Fluor®488-conjugated Goat Anti-rabbit IgG secondary antibody (green). Positive staining was localized to nucleus.



Anti-TLE1 rabbit polyclonal antibody at 1:500 dilution

Lane A: HepG2 Whole Cell Lysate

Lysates/proteins at 30 µg per lane.

Secondary

Goat Anti- Rabbit IgG H&L (Dylight 800) at 1/10000 dilution.

Developed using the Odyssey technique.

Performed under reducing conditions.

Predicted band size: 83 kDa

Observed band size: 78 kDa (We are unsure as to the identity of these extra bands.)

Manufactured By Sino Biological Inc., FOR RESEARCH USE ONLY. NOT FOR USE IN HUMANS.

Tel: 215-583-7898 (US); +86-400-890-9989 (Global) •

<http://www.sinobiological.com>