

CBFB / CBF-beta Antibody, Rabbit PAb, Antigen Affinity Purified



Sino Biological
Biological Solution Specialist

Catalog Number: 101203-T34

GENERAL INFORMATION

Immunogen:	A synthetic peptide corresponding to the N-terminus of the Human CBFB / CBF-beta
Preparation	Produced in rabbits immunized with a synthetic peptide corresponding to the N-terminus of the Human CBFB / CBF-beta, and purified by antigen affinity chromatography.
Ig Type:	Rabbit IgG
Specificity:	Human Mouse (Species predicted to react based on 100% sequence homology)
Formulation:	0.2 µm filtered solution in PBS
Storage:	This antibody can be stored at 2°C-8°C for one month without detectable loss of activity. Antibody products are stable for twelve months from date of receipt when stored at -20°C to -80°C. Preservative-Free. Avoid repeated freeze-thaw cycles.
Alternative Names:	PEBP2B

APPLICATIONS

Applications:	WB, ICC/IF
---------------	------------

RECOMMENDED CONCENTRATION

ICC/IF	ICC/IF: 1:200-1:1000
Western Blot	WB: 1:500-1:2000

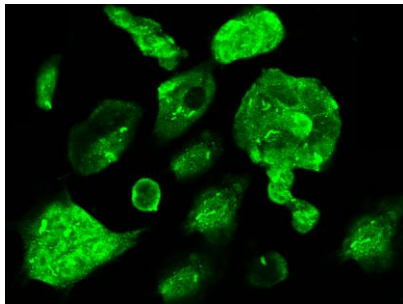
Please Note: Optimal concentrations/dilutions should be determined by the end user.

CBFB / CBF-beta Antibody, Rabbit PAb, Antigen Affinity Purified

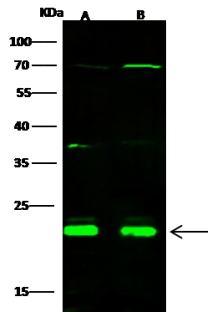


Sino Biological
Biological Solution Specialist

Catalog Number: 101203-T34



Immunofluorescence staining of CBFB in 293 cells. Cells were fixed with 4% PFA, permeabilized with 0.3% Triton X-100 in PBS, blocked with 10% serum, and incubated with rabbit anti-Human CBFB polyclonal antibody (dilution ratio 1:300) at 4°C overnight. Then cells were stained with the Alexa Fluor 488-conjugated Goat Anti-rabbit IgG secondary antibody (green). Positive staining was localized to cytoplasm and nucleus.



Anti-CBFB rabbit polyclonal antibody at 1:500 dilution

Lane A: Jurkat Whole Cell Lysate
Lane B: K562 Whole Cell Lysate

Lysates/proteins at 30 µg per lane.

Secondary
Goat Anti- Rabbit IgG H&L (Dylight 800) at 1/10000 dilution.

Developed using the Odyssey technique.
Performed under reducing conditions.

Predicted band size: 22 kDa
Observed band size: 22 kDa