

# ISL2 Antibody, Rabbit PAb, Antigen Affinity Purified



Sino Biological  
Biological Solution Specialist

Catalog Number: 101249-T34

## GENERAL INFORMATION

<b>Immunogen:</b>	A synthetic peptide corresponding to the center region of the Human ISL2
<b>Preparation</b>	Produced in rabbits immunized with a synthetic peptide corresponding to the center region of the Human ISL2, and purified by antigen affinity chromatography.
<b>Ig Type:</b>	Rabbit IgG
<b>Specificity:</b>	Human ISL2
<b>Formulation:</b>	0.2 µm filtered solution in PBS
<b>Storage:</b>	This antibody can be stored at 2°C-8°C for one month without detectable loss of activity. Antibody products are stable for twelve months from date of receipt when stored at -20°C to -80°C. Preservative-Free. Avoid repeated freeze-thaw cycles.
<b>Alternative Names:</b>	Islet-2, ISL2

## APPLICATIONS

<b>Applications:</b>	WB, ICC/IF
----------------------	------------

## RECOMMENDED CONCENTRATION

<b>ICC/IF</b>	ICC/IF: 1:1000-1:5000
<b>Western Blot</b>	WB: 1:500-1:1000

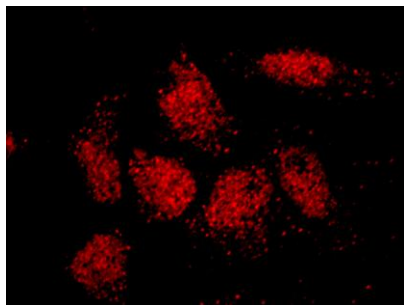
***Please Note: Optimal concentrations/dilutions should be determined by the end user.***

# ISL2 Antibody, Rabbit PAb, Antigen Affinity Purified

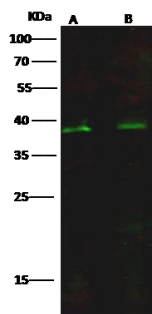


Sino Biological  
Biological Solution Specialist

Catalog Number: 101249-T34



Immunofluorescence staining of ISL2 in HeLa cells. Cells were fixed with 4% PFA, permeabilized with 0.3% Triton X-100 in PBS, blocked with 10% serum, and incubated with rabbit anti-human ISL2 polyclonal antibody (1:5000) at 4°C overnight. Then cells were stained with the Alexa Fluor®594-conjugated Goat Anti-rabbit IgG secondary antibody (red). Positive staining was localized to nucleus.



Anti-ISL2 rabbit polyclonal antibody at 1:500 dilution

Lane A: 293T Whole Cell Lysate

Lane B: HeLa Whole Cell Lysate

Lysates/proteins at 30 µg per lane.

Secondary

Goat Anti- Rabbit IgG H&L (Dylight 800) at 1/10000 dilution.

Developed using the Odyssey technique.

Performed under reducing conditions.

Predicted band size:40 kDa

Observed band size:38 kDa