

claudin 1/CLDN1 Antibody, Rabbit PAb, Antigen Affinity Purified



Sino Biological
Biological Solution Specialist

Catalog Number: 101363-T08

GENERAL INFORMATION

Immunogen:	A synthetic peptide corresponding to the C-terminus of the Human claudin 1/CLDN1
Preparation	Produced in rabbits immunized with a synthetic peptide corresponding to the C-terminus of the Human claudin 1/CLDN1, and purified by antigen affinity chromatography.
Ig Type:	Rabbit IgG
Specificity:	Human claudin 1/CLDN1
Formulation:	0.2 µm filtered solution in PBS
Storage:	This antibody can be stored at 2°C-8°C for one month without detectable loss of activity. Antibody products are stable for twelve months from date of receipt when stored at -20°C to -80°C. Preservative-Free. Sodium azide is recommended to avoid contamination (final concentration 0.05%-0.1%). It is toxic to cells and should be disposed of properly. Avoid repeated freeze-thaw cycles.

APPLICATIONS

Applications:	IHC-P
----------------------	-------

RECOMMENDED CONCENTRATION

IHC-P	IHC-P: 1:500-1:2000
--------------	---------------------

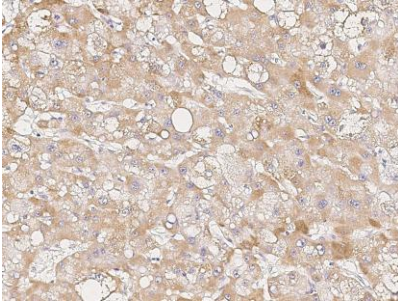
Please Note: Optimal concentrations/dilutions should be determined by the end user.

claudin 1/CLDN1 Antibody, Rabbit PAb, Antigen Affinity Purified

Catalog Number: 101363-T08



Sino Biological
Biological Solution Specialist



Immunohistochemical staining of human CLDN1 in human hepatoma with rabbit polyclonal antibody (1:1000, formalin-fixed paraffin embedded sections).